

# MAT Mock Test 1

## Language Comprehension

### Instructions [1 - 3 ]

Each question has a group of sentences marked A, B, C, D and E. Arrange these to form a logical sentences.

1. A. Environment Education Unit of center for Science.  
B. Environment has always been working towards provoiding easy to understand reading material.  
C. Their new publication on this subject is an attempt to lend teachers a helping hand.  
D. It unfolds in two sections first, Climate Change, how to make sense of it all and second, Natural Resources, how to share and care.  
E. However, they are introduced to students not as a paragraph to memorise but as an activity to do.

- A ACEBD
- B DBCAE
- C ABCDE
- D BECAD

2. A. A famous Japanese rock garden at Ryoan ji in North-West Kyoto, Japan.  
B. The rocks of various sizes are arranged on small white pebbles in five groups, each comprising, five, two, three, two and three rocks.  
C. The garden is 30m long from East to West and 10m from North to South.  
D. The garden contains 15 rocks arranged on the surface of white pebbles in such a manner that visitors can see only 14 of them at once from whichever angle the garden is viewed.  
E. There are no trees, just around 15 irregularly shaped rocks of varying sizes, some around by rocks, arranged in a bad of white grancelsard that is ranked everyday.

- A ACEBD
- B CAEDB
- C DEABC
- D BADEC

3. A. When they gathered together, the Buddha was completely silent and some speculated that perhaps the Buddha was tired or ill.  
B. It is said that Gautam Buddha gathered his disciples one day for a Dharma talk.  
C. One of Buddha's disciples, Mahakasyapa, silently gazed at the flower and broke into a broad smile.  
D. The origins of Zen Buddhism are ascribed to the flower Sermon, the earliest source for which comes from the 14th century.  
E. The Buddha silently held up and twirled a flower and twinkled his eyes, several of his disciples tried to interpret what this meant though none of them were correct.

A EBDAC

B DBAEC

C BCDEA

D CADBE

**Instructions [4 - 7 ]**

Choose the best option for the blank.

4. Ironically of the normally ..... speaker became very shy and ..... when confronted with the ..... afraid stares of her eager audience.

- A. Quiet, passenger  
B. Garrulous, reticent  
C. Disappeancer, passant  
D. Humble super, ciliour

5. Although the whole team acted in unison, each member ..... for a/an the ..... of the production process.

- A Reliable, source  
B Responsible, element  
C Appointed, article  
D Gravel, felory

6. The studies of the children were ..... and ..... was the result of it

- A Neglected, ignorance
- B Interrupted, incongruence
- C Officiated, alienation
- D Instructed, genius

7. The ..... correction is a good ..... to add the blenechip sum phasma certificates stock to your portfolio

- A. Organs, opportunity
- B. Undergoing, change
- C. Lancing, attempt
- D. Ironside, time

#### Instructions [8 - 11]

Each of these questions has a text portion followed by four alternative summaries. Choose the option that best captures the essence of the text.

8. This decade has heralded the arrival of China and the rise of India on the world stage. Due to global recession the balance of power is shifting from the West to East China has already occupied secondplace in the world's biggest economies. BUT India is still struggling with formidable challenges likecrushing poverty of millions, uneven growth, Can we in all honesty aspire to be a genuine, superpower?

- A. Economic meltdown in the West has tilted the balance of economic power towards Asia
- B. China 's Gross Domestic Product is next only to that of the United States of America
- C. Even though India is a fast growing economy, it has to cross many hurdles before becoming a superpower
- D. Corruption and poverty in India are the main, hindrances to its economic growth

9. Get your grammar right! Live in the active voice rather in the passive, thinking more about what you do than about what happens to you. Live in the present tense, facing the duty at hand without regretfor the past or worrying about the future. Live in the first person, criticizing yourself rather than finding faults with others.

- A. Self-introspection is always better than being critical of others
- B. The past is gone, future is uncertain, so live for the present
- C. Do your duty earnestly without worrying about tht outcome
- D. Be optimistic, confident, hard-working and self-introspective

10. Alexander technique is a therapy in complementary medicine for improving health by teaching

people to move, sit and stand efficiently. it is designed to release unnecessary muscle tensions in order to eliminate or reduce the severity of wide range of disorders like back pain, asthma, repetitive strain, injury and stuttering. Training is carried out in one to one sessions under a qualified teacher. The technique was started by F. Matthias Alexander in 1890 for his breathing problem and hoarseness.

- A. Alexander technique is a 120 years old therapy designed by F Matthias Alexander for his self treatment
- B. Alexander technique therapy is practised in one to one sessions under the guidance of an expert
- C. In Alexander technique,a qualified teacher works on the postures of a person, releasing muscular tension, to cure a number of disorders
- D. Alexander technique is helpful in treating Pains, lung problems, spinal problems and speech disorders

11. As things stand now, each country's financial system is being sustained and supported by its own government. Governments are primarily concerned with their own economies. This gives rise to financial protectionism, which threatens to disrupt and perhaps destroy global financial markets. So,regulations must become international in scope. Otherwise, global financial markets will be destroyed by regulatory arbitrage.

- A. Global markets need global regulations but each nation is rooted in the principle of national sovereignty
- B. Financial protectionism damages the concept of globalisation
- C. Global markets need international guidelines for the smooth running of global trade
- D. Every country tries to protect its own financial interests

#### Instructions [12 - 14 ]

In each of these questions, a jumbled word is given. Rearrange the jumbled word and select the word which is opposite in meaning to the rearranged word

#### 12. DORGSEIAN

- A Beautiful
- B Future
- C Chaotic
- D Bright

**13. THYEALH**

- A** Coward
- B** Empty
- C** Closed
- D** Sick

**14. ERNUESGO**

- A** False
- B** Dark
- C** Miser
- D** Small

**Instructions [15 - 18 ]**

Study the passages below and answer the questions. Passage I

A US economy firmly on the path of revival and robust growth would be of great significance for the world economy and Indian exporters should be looking at a sustained rise in demand in the US. The US economy, as per recent-released figures has already added some 171000 jobs in the month prior. This shows that the US has made real progress in rejuvenating the economy. Of course, we are quite happy to see the revival of job growth in the US, especially because the Indian industry has had a not so minor role in this development. Indian companies have helped add some 20000 new jobs to the US economy in 2012-13 itself. Future Indian investment directed towards the US is likely to add to this number. Most of these new jobs are actually being created by the Indian Information Technology (IT) sector, which is mistakenly derided as a 'job stealer' by the US. However, empirical evidence clearly suggests that 'outsourcing improves corporate bottom-lines in the US, which in turn allows corporates to expand, thereby leading to the generation of new jobs. The current rhetoric on outsourcing is overblown and counterproductive. There is after all no real use in creating impediments for a sector that has organically linked our two economies and is helping generate net employment in both lands. A growing India-US economic relationship is necessarily IT enabled.

**15. According to the passage, to revive the US economy, Indian industry**

- A** did not have much contribution
- B** had, in fact, no role to play
- C** had a significant contribution
- D** could not do much about it

**16. As per the passage, recent propaganda against outsourcing of jobs in the US is**

- A. quite genuine and should have been more loud
- B. fairly logical and justified
- C. not quite correct
- D. good for the growth of the US industry

**17. Which of the following statement(s) is true as per the information contained in the passage?**

- A. Indian industry is capable of helping the US economy in the near future.
- B. Indian IT sector has a major role in creating new jobs in the US.
- C. Revival of the US economy would help Indian exporters a lot.

- A Only A
- B B and C
- C A, B and C
- D A and C

**18. Indian IT sector has created jobs in**

- A the US alone
- B Both India and the US
- C Only India
- D None of the above

**Instructions [19 - 22 ]**

Study the passages below and answer the questions. Passage II

The Supreme Court wants to find out whether additional taxes on diesel cars can curb air pollution. But evidence from Europe, where around half of the automobiles are diesel-based and the air is far cleaner than in our cities, demonstrates that diesel cars cannot by themselves be blamed for deterioration in air quality and evidence from the Central Pollution Control Board clearly shows that industries, road dust from construction and geography account for most of the particulate matter emission in cities. Power plants and diesel generators also increase pollution and the bulk of the transport emissions are on account of heavy commercial vehicles that use much older technologies than new diesel cars. Undoubtedly, adulteration of diesel with subsidised to the problem. So, a tax on new diesel cars is too blunt an instrument which certainly will not yield clean aidt fact skew the market towards used rather than new cars which would not only hurt

the automobile industry but also further air pollution. Cleaning the air in our cities would require concerted efforts by authorities including of diesel prices. ending sale of subsidised kerosene and supply of better quality fuel. It would also require a significant improvement in public transport systems and better enforcement of pollution control norms. The solution therefore is not so much in constraining the industry with new taxes, but in pushing through positive measures that enable their livelihoods while also breathing clean air.

**19. As per the passage, which of the following meaasure(s) is considered necessary to reduce pollution in our cities?**

- A**      Introducing better public transport systems
- B**      Stopping availability of cheap kerosene in the market
- C**      Introducing good quality fuel in the market
- D**      All of the above

**20. What is the meaning of the word 'skew used in the passage?**

- A**      Change
- B**      Distort
- C**      Divert
- D**      Introduce

**21. According to the passage, diesel cars are**

- A.** solely responsible for air pollution in our cities
- B.** not at all blameworthy for air pollution
- C.** not much responsible for polluting air
- D.** None of the above

**22. As per information given in the passage. which of the following statements is not true?**

- A.** Government needs to relax pollution control norms.
- B.** Commercial vehicles increase pollution substantially.
- C.** In Europe most automobiles are not diesel-based.

- A**      A and C
- B**      Only B
- C**      Only C

**D** A and B

**Instructions [23 - 26]**

Study the passages below and answer the questions. Passage III

The Election Commission (EC) has proposed an amendment to the 1950 Representation of the people Act (RPA) to ban all opinion polls once the election process is under way. which could be months before actual elections are held. Following the passing of the 2009 RPA (Second Amendment) Bill, a ban on exit polls conducted while the polling process is going on is already in place. While there may be a case for banning opinion polls or their republication while polling is actually underway and poll campaigning has ceased why all opinion polls should be banned is unclear. Nevertheless major political parties argued for this at last year's consultations on electoral reform, and the EC appears to have succumbed. Proponents of the ban argue, contradictorily, that, opinion polls tend to influence voters and voting patterns besides creating confusion galore. also drawn attention to complaints about political parties funding some opinion polls.

But such a draconian ban on all opinion polls is tantamount to muzzling freedom of expression • as well as the right of the media and research organisations to undertake such pre-poll exercises. These, after all, are an important metric to assess the people's mood and their aspirations. and their perception of political parties. Multiple opinion polls competing with each other restrict the possibility of manipulation by anyone pre-poll survey. Finally, the perception that voters are gullible enough to be duped by opinion polls, is an affront to their intelligence and political sense.

**23. According to the passage, presently, conducting exit polls**

- A. during the election process is not permitted
- B. during polling process is banned
- C. at the time of polling will be banned
- D. None of the above

**24. As per the passage, which of the following statement(s) is true?**

- A. It is incorrect to presume that Indian voters can be influenced by opinion polls.
- B. Major political parties of India had agreed to ban opinion polls.
- C. We should not doubt the intelligence of Indian voters.

- A Only A
- B A and B
- C A and C
- D B and C

**25. According to the passage, some political parties**



- A keep themselves away from opinion polls
- B try to bribe the opinion polls for favours
- C do not want to get involved with opinion polls
- D None of the above

26. As per the passage, when there are a number of opinion polls conducted at the same time, it is

- A quite easy to manipulate anyone pre-poll survey
- B not easy to manipulate any one pre-poll survey
- C quite possible to manipulate anyone pre-poll survey
- D None of the above

**Instructions [27 - 30 ]**

Study the passages below and answer the questions.

**Passage IV**

In the decade to come, the United States, Europe, and Japan are likely to grow slowly. Their sluggishness, however, will look less worrisome compared with the even bigger story in the global economy, which will be the three to four percent slowdown in China, which is already under way, with a possibly deeper slowdown in store as the economy continues to mature. China's population is simply too big and aging too quickly for its economy to continue growing as rapidly as it has. With over 50 percent of its people now living in cities, China is nearing what economists call "the Lewis turning point": the point at which a country's surplus labor from rural areas has been largely exhausted. This is the result of both heavy migration to cities over the past two decades and the shrinking work force that the one-child policy has produced. As growth slows in China and in the advanced industrial world, these countries will buy less from their export-driven counterparts, such as Brazil, Malaysia, Mexico, Russia, and Taiwan. During the boom of the last decade, the average trade balance in emerging market countries that have managed to sustain a five percent growth rate for a full decade, since 1930, 52 percent were democracies and 48 percent were authoritarian. At least over the short to medium term, what matters is not the type of political system a country has, but rather the presence of leaders who understand and can implement the reforms required for growth.

27. According to passage, which of the following statements is not true?

- A. During the past 10 yr or so, only democratic countries have shown a sustained growth.
- B. During the 10 yr or so, Japan is likely to show a slow rate of growth.
- C. Leaders of a country can bring about changes which promote growth.

- A only B
- B only A
- C A and C
- D B and C

28. As per the passage, in our immediate future, which of the following factors will cause more anxiety?

- A. China's unprecedented growth
- B. European countries 'slow growth
- C. China's slow growth
- D. None of the above

29. Which of the following is a reason for China's slow growth rate?

- A. Considerable migration of labour from rural to urban, areas has resulted in reduction of workforce availability
- B. Family planning measures adopted by Chinese families
- C. China's population is aging rather quickly
- D. All of the above

30. In the years to come, it appears that China's economy will

- A grow at a rapid pace
- B grow at a very high rate
- C show a marked slowdown
- D None of the above

#### Instructions [31 - 34]

Study the passages below and answer the questions.

#### Passage V

The larger global geo-economic backdrop to the next decade (2013-23) is the likely emergence of as the world's largest single-state economy overtaking the USA towards the end of this period. The 'critical question will be whether China under a new leadership will subscribe to the existing global status quo or adopt a revisionist approach — and seek to alter the contours of i global governance and related protocols to its own template. Within Asia, the texture and orientation of the triangular and bilateral relationship that will emerge between China, Japan and India over the next decade against the backdrop

of the US in relative economic decline will exude many contradictory compulsions — the leitmotif of the 'contra-polar' world order. While China may be the world's most prosperous state in GDP terms, it will still rank low in per capita income and the US is likely to retain its military supremacy for at least two decades. . It is instructive that India is also likely to join the ranks of the world 's three largest single-state economies by 2030 with an estimated GDP of the US - \$ 6.68 trillion — though it will be a distant subaltern when 'compared to China - \$25.6 trn and USA - \$ 22.8 trn. Will China's intent to remain Asia's unchallenged hegemony impact Indian interests? The Chinese track-record over the last two decades (since the end of the Cold War in 1991) has been chequered and many of its initiatives have been either directly adversarial or inimical to Indian interests. The most disturbing development has been the covert nuclear weapon and missile support that China has provided to Pakistan. The Mumbai carnage of November 2008 is a case in point. But much greater pro-active perspicacity is called for than what Delhi has exuded to date.

**As per information given in the passage, China has**

- A**      been openly providing nuclear arms support, to Pakistan
- B**      not been giving any support to Pakistan in supply of nuclear weapons
- C**      been quickly supporting Pakistan in supplying nuclear weapons
- D**      None of these is applicable

**31. According to the passage, which of the following statements is not true?**

- A.** It is not quite clear how China will conduct the new world order when it becomes a global power economically
- B.** When China would emerge as the biggest economy, there would not be much change in relationships between Asian countries
- C.** The new leadership in China may change its relations with other nations of the world
- D.** All of the above

**32. The word 'leitmotif' used in the passage means**

- A**      message
- B**      theme
- C**      method
- D**      significance

33. As per information given in the passage, after a few years when China emerges as a world economic power, India

- A. need not change its stance and continue with the existing policy towards China
- B. should keep China's policy towards India in view and adopt a clear cut stance towards China
- C. would have to face the consequences of China's stance towards India
- D. need not worry much about China's policies towards India

34. If 15 men, 24 women and 36 boys can do a piece of work in 12 days, working 8h per day, how many men must be associated with 12 women and 6 boys to do another piece of work 24 times as large in 30 days working 6 h per day?

- A 6
- B 4
- C 8
- D 10

## Mathematical Skills

35. The horizontal distance between two towers is 60m. The angular elevation of the top of the taller tower as seen from the top of the shorter one is  $30^\circ$ . If the height of the taller tower is 150m, the height of the shorter one is

- A 100m
- B 106m
- C 116m
- D None of these

36. A boat travels upstream from B to A and downstream from A to B in 3 h. If the speed of the boat in still water is 9 km/h and the speed of the current is 3 km/h, what is the distance between A and B?

- A 6 km
- B 4 km
- C 8 km
- D 12 km

37. The electricity bill of a certain establishment is partly fixed and partly varies with the number of units of electricity consumed. When in a certain month 540 units are consumed, the bill is 1800. In another month 620 units are consumed and the bill is 2040. In yet another month 500 units are consumed. The bill for that month would be

- A ₹ 1680
- B ₹ 1560
- C ₹ 1840
- D ₹ 1950

38. A booster pump can be used for filling as well as for emptying a tank. The capacity of the tank is 2400 m<sup>3</sup>. The emptying capacity of the tank is 10 m<sup>3</sup> per min higher than its filling capacity and the pump needs 8 min lesser to empty the tank than it needs to fill it. What is the filling capacity of the pump?

- A. 60m<sup>3</sup>/min
- B. 50m<sup>3</sup>/min
- C. 72m<sup>3</sup>/min
- D. None of these

39. A and B walk around a circular track. They start at 8 am from the same point in the opposite directions. A and B walk at a speed of 2 rounds per hour and 3 rounds per hour respectively. How many times shall they cross each other before 9:30 am?

- A 6
- B 5
- C 7
- D 8

40. The dimensions of a room are  $10m \times 7m \times 5m$ . There are 2 doors and 3 windows in the room. The dimensions of the doors are  $1m \times 3m$ . One window is of size  $2m \times 1.5m$  and the other two windows are of size  $1m \times 1.5m$ . The cost of painting the walls at ₹ 3 per  $m^2$  is

- A ₹ 578.50
- B ₹ 474
- C ₹ 684
- D ₹ 894

41. There are two bags, one of which contains 3 black and 4 white balls, while the other contains 4 black and 3 white balls. A dice is cast. If the face 1 or 3 turns up, a ball is taken from the first bag and if any other face turns up a ball is chosen from the second bag. The probability of choosing a black ball is

- A. 11/21
- B. 10/21
- C. 12/21
- D. 9/21

42. A runs 13 times as fast as B. If A gives B a start of 380 in. How far must the winning post be so that A and B reach it at the same time?

- A 300 m
- B 200 m
- C 270 m
- D 160 m

43. A cistern, open at the top, is to be lined with sheet lead which weighs  $27\text{kg}/\text{m}^3$ . The cistern is 4.5 m long and 3 m wide and holds  $50\text{ m}^3$ . The weight of lead required is

- A. 1764.60 kg
- B. 1864.62 kg
- C. 1660.62 kg
- D. 1860.62 kg

44. A cylindrical tub of radius 12 cm contains water up to a depth of 20 cm. A spherical iron ball

is dropped into the tub and thus the level of water is raised by 6.75 cm. The radius of the ball is

- A 6 cm
- B 4.5 cm
- C 7.25 cm
- D 9 cm

45. What per cent selling price would be 34% of the cost price if the gross profit is 26% of the selling price?

- A 74.00%
- B 25.16%
- C 17.16%
- D 88.40%

46. The present worth of a bill due 7 months hence is ₹1200. If the bill were due at the end of  $2\frac{1}{2}$  yr, its present worth would be ₹1016. What is the rate per cent of the bill?

- A 8%
- B 10%
- C 16%
- D 18%

47. If the ages of P and R are added to twice the age of Q, the total becomes 59. If the ages of Q and R are added to thrice the age of P, the total becomes 68 and if the age of P is added to thrice the age of Q and thrice the age of R, the total becomes 108. What is the age of P?

- A 19 yr
- B 15 yr
- C 17 yr
- D 12 yr

48. If 6 years are subtracted from the present age of Shyam and the remainder is divided by 18,

then the present age of his grand son Anup is obtained. If Anup is 2 years younger to Mahesh whose age is 5 years, then what is the age of Shyam?

- A 48 yr
- B 60 yr
- C 84 yr
- D 96 yr

49. There are two concentric circular track of radii 100m and 102m, respectively . A runs on the inner track and goes once round in 1 min 30 sec, while B runs on the outer track in 1 min 32 sec. Who runs faster?

- A A
- B B
- C Cannot be determined
- D None of these

50. A man reaches his office 10 minutes late if he drives his car at 40 kmph, and 5 minutes early if he drives his car at 50 kmph from his home. How should I calculate the distance of his office from his home?

- A 25
- B 50
- C 75
- D 100

51. Out of 20 consecutive positive integers, two are chosen at random. The probability that their sum is odd is

- A.  $\frac{10}{19}$
- B.  $\frac{1}{20}$
- C.  $\frac{19}{20}$
- D.  $\frac{9}{19}$

52. Two coal loading machines, each working 12 h per day for 8 days, handle 9000 tonne of coal with



an efficiency of 90%, while 3 other coal loading machines at an efficiency of 80% are set to handle 12000 tonne of coal in 6 days. How many hours per day should each machine work?

- A 18 h per day
- B 16 h per day
- C 20 h per day
- D 14 h per day

53. Six pipes are fitted to a water tank. Some of these are inlet pipes and the others outlet pipes. Each inlet pipe can fill the tank in 9 h and each outlet pipe can empty the tank in 6 h. On opening all the pipes, an empty tank is filled in 9 h. The number of inlet pipes is

- A 4
- B 3
- C 2
- D 5

54. A student purchased a computer system and a colour printer. If he sold the computer system at 10% loss and the colour printer at 20% gain, he would not lose anything. But if he sells the computer system at 5% gain and the colour printer at 15% loss, he would lose 2 800 in the bargain. How much did he pay for the colour printer?

- A ₹ 16000
- B ₹ 8000
- C ₹ 9000
- D ₹ 5334

55. Suppose that a maximum of 25 g of salt dissolves in 100 g of water. Any more salt, if added, remains undissolved and a sediment falls at the bottom. Now, water is evaporated from 1 kg of a 4% solution at the rate of 28 g per hour. After how long will it start sedimenting, approximately?

- A 29 h
- B 31 h

- C 35 h
- D 23 h

56. In a defective 6 faced die with numbers 1 to 6 inscribed, probability of odd is 2 times that of even. What is the probability to get number 5 in single throw?

- A.  $\frac{2}{9}$
- B.  $\frac{4}{81}$
- C.  $\frac{1}{3}$
- D.  $\frac{1}{9}$

57. Out of the total production of iron from hematite, an ore of iron, 20% of the ore gets wasted. Out of the remaining iron, only 25% is pure iron. If the pure iron obtained in a year from a mine of hematite was 80000 kg, then the quantity of hematite mined in the year is

- A 400000 kg
- B 500000 kg
- C 450000 kg
- D 600000 kg

58. A car driver, driving in a fog, passes a pedestrian who was walking at the rate of 2 km/h in the same direction. The pedestrian could see the car for 6 min and it was visible to him up to a distance of 0.6 km. What was the speed of the car?

- A 15 km/h
- B 30 km/h
- C 20 km/h
- D 8 km/h

59. A, B and C working together completed a job in 10 days. However, C only worked for the first three days when  $\frac{37}{100}$  of the job was done. Also, the work done by A in 5 days is equal to the work done by B in 4 days. How many days would be required by the fastest worker to complete the entire work?

- A 25 days
- B 20 days
- C 30 days
- D 40 days

60. Three different containers contain different quantities of a mixture of milk and water, whose measurements are 403 kg, 434 kg and 465 kg. What biggest measure must be there to measure all the different quantities exactly?

- A 70 kg
- B 51 kg
- C 31 kg
- D 41 kg

61. A conical tent is 5m high and the radius of the base is 12m. Find the slant height if the cost of 1m square canvas is Rs 70. Find the cost of canvas required to make the tent.

- A 34322
- B 34320
- C 34321
- D 34319

62. At a point on level ground,

the angle of elevation of a vertical tower is found to be such that its tangent is  $\frac{5}{12}$ . On walking 192 m towards the tower, the tangent of the angle of elevation is  $\frac{3}{4}$ . The height of the tower is

- A 96 m
- B 150 m
- C 180 m
- D 226 m

64. In a medical certificate, by mistake a candidate gave his height as 25% more than actual. In the interview panel, he clarified that his height was 55 ft 5 inches. What is the percentage correction made by the candidate from his stated height to his actual height?

- A 28.56%

- B** 20%
- C** 25%
- D** None of these

65. A manufacturer of a certain item can sell all he can produce at the selling price of ₹ 60 each. It cost him ₹ 40 in materials and labour to produce each item and he has overhead expenses of ₹ 3000 per week in order to operate that plant. The number of units he should produce and sell in order to make a profit of at least ₹ 1000 per week is

- A** 300
- B** 400
- C** 250
- D** 200

66. A jar full of whisky contains 40% alcohol. A part of this whisky is replaced by another containing 19% alcohol and now the percentage of alcohol was found to be 26%. What quantity of whisky is replaced?

- A.**  $\frac{2}{3}$
- B.**  $\frac{1}{3}$
- C.**  $\frac{3}{7}$
- D.**  $\frac{4}{7}$

67. A fair coin is tossed repeatedly. If head appears on the first four tosses, then the probability of appearance of tail on the fifth toss is

- A.**  $\frac{1}{2}$
- B.**  $\frac{1}{7}$
- C.**  $\frac{3}{7}$
- D.**  $\frac{2}{3}$

68. The fuel indicator in a car shows  $\frac{1}{5}$  th of the fuel tank as full. When 22 more litres of fuel are poured into the tank, the indicator rests at three-fourth of the full mark. What is the capacity of the fuel tank?

- A** 40 L
- B** 30 L
- C** 25 L
- D** 35 L

69. A sum of money is accumulating at compound interest at a certain rate of interest. If simple interest instead of compound were reckoned, the interest for the first two years would be diminished by ₹ 20 and that for the first three years, by 61. What is the sum?

- A ₹ 7500
- B ₹ 7000
- C ₹ 8000
- D ₹ 6500

70. A man covers a certain distance on a toy train. If the train moved 4 km/h faster, it would take 30 min less. If it moved 2 km/h slower, it would have taken 20 min more. What is the distance covered?

- A 65 km
- B 60 km
- C 70 km
- D 75 km

71. Two trains, 330 and 110 m long, are going in the same direction. The faster train takes one minute to pass the other completely. If they are moving in opposite directions, they pass each other completely in 3 s. What is the speed of the faster train?

- A 42 m/s
- B 38 m/s
- C 46 m/s
- D 50 m/s

72. The average age of all the students of a class is 18 yr. The average age of boys of the class is 20 yr and that of the girls is 15 yr. If the number of girls in the class is 20, then what is the number of boys in the class?

- A 30
- B 15
- C 45

**D** 50

73. The total tractor population in a State is 294000, out of which 150000 are made by Mahindra & Mahindra. Out of every 1000 Mahindra tractors, 98 are red in colour. But only 5.3% of the total tractor population is red. Find the percentage of non-Mahindra tractors that are red.

- A** 3%
- B** 5.025%
- C** 5.130%
- D** 6.140%

74. If 7% of the total quantity of wheat is lost in grinding when a country has to import 12 million tonne

- A** 600 million tonne
- B** 500 million tonne
- C** 400 million tonne
- D** 700 million tonne

## Data Analysis & Sufficiency

### Instructions [75 - 79]

In each of these questions two quantities A and B are given. Compare the two quantities

75. Suresh's salary, which is greater than ₹ 10000 is 75% of Sandra's salary. Dutt's salary is 80% of Suresh's salary

- A.** Sandra's salary
- B.** Dutt's salary

- A.** if quantity A is greater than quantity B
- B.** if quantity B is greater than quantity A
- C.** if quantities A and B are equal
- D.** if comparison cannot be made

**76. The total surface area of a cube = 150.**

- A. The length of one edge of the cube**
- B. 4.5**

**A. if quantity A is greater than quantity B**

**B. if quantity B is greater than quantity A**

**C. if quantities A and B are equal**

**D. if comparison cannot be made**

**77. A merchant made a profit of ₹ 275 on the sale price of a sweater that cost the merchant ₹ 1225.**

- A. The profit expressed as a percentage of the sale cost to the merchant**
- B. The profit expressed as a percentage of the sale price.**

**A. if quantity A is greater than quantity B**

**B. if quantity B is greater than quantity A**

**C. if quantities A and B are equal**

**D. if comparison cannot be made**

**78. There are 28 students in a class : all born in 1990.**

- A. The probability that all their birthdays are in February.**
- B. The probability that all their birthdays fall on a Friday.**

**A. if quantity A is greater than quantity B**

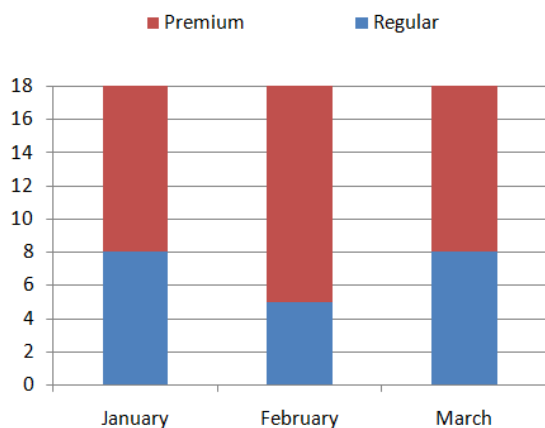
**B. if quantity B is greater than quantity A**

**C. if quantities A and B are equal**

**D. if comparison cannot be made**

**79. Based on the graph compare A and B.**

**Gasoline Sales**



- A. The percent change in premium sales from February to March.  
 B. The percent change in total sales from January to February.

- A. if quantity A is greater than quantity B  
 B. if quantity B is greater than quantity A  
 C. if quantities A and B are equal  
 D. if comparison cannot be made

#### Instructions [80 - 84 ]

Study the information to answer these questions

In a city there are modes of transport available B, C, D, E and F for commuting. Out of the total number of commuters commuting daily in the city 17171 commute only by A. 7359 commute only by B and 22077 commute only by C. 14718 commute only by D, 4906 commute only by E and 7355 commute only by F. 26983 commute by C as well as A, 9812 commute by E as well as A, and 12265 commute by C as well as E daily. Assume that there is no overlap between the commuters of different modes and their combination) of transport

80. The total number of commuters commuting by A from what percent of the total number of commuters commuting daily?

- A 22  
 B 44  
 C 14  
 D 36

81. What is the difference in percentage of commuters commuting by E and that of B and F taken together?



- A 22
- B 25
- C 13
- D 10

82. The total number of commuters commuting by D and B taken together from what percent of the total number of commuters commuting daily?

- A 12
- B 6
- C 28
- D 16

83. A majority of the commuters in the city use

- A A
- B B
- C C
- D D

84. The number of commuters commuting by B, D, and F taken together from what percent of the total number of commuters commuting daily by A, C and E taken together?

- A 44
- B 38
- C 43
- D 46

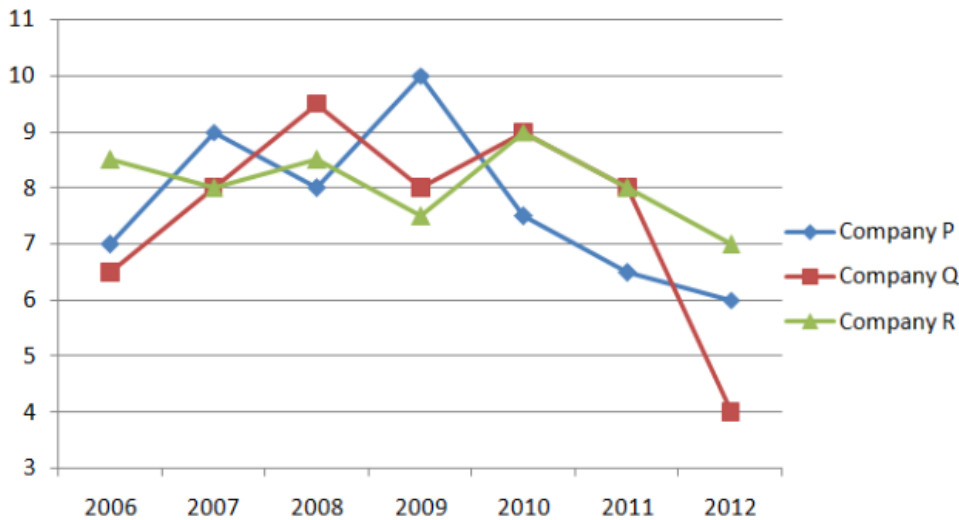
**Instructions [85 - 89 ]**

Study the following graph to answer these questions

Three different finance companies declare fixed annual rate of interest on the amount invested with them by investors. The rate of interest offered by these companies may differ from year to year depending on the variation in the economy of the country and the banks rate of interest. The annual rate of interest offered by the three companies P, Q, and R over the year are shown by the line-graph

provided below.

**Annual Rate of Interest Offered by three Finance Companies**  
**Over the Years**



85. If two different amount in the ratio 8 : 9 are invested in companies P and Q respectively in 2012, then the amounts received after one year as interest from companies P and Q respectively are in the ratio

- A. 2 : 3
- B. 3 : 4
- C. 6 : 7
- D. 4 : 3

86. In 2010, a part of ₹ 30 lakh was invested in company P and the rest was invested in companies Q and R for one year. The total interest, received was ₹ 2.43 lakh. What was the amount invested in company P?

- A. ₹ 7 lakh
- B. ₹ 8 lakh
- C. ₹ 18 lakh
- D. Cannot be determined

87. An investor invested a sum of ₹ 12 lakh in company P in 2008. The total amount received after one year was reinvested in the same company for one more year. The total appreciation received by the investor on his investment was

- A. ₹ 282000
- B. ₹ 296200
- C. ₹ 216000
- D. ₹ 225600

88. A sum of Rs. 4.75 lakhs was invested in Company Q in 2009 for one year. How much more interest would have been earned if the sum was invested in Company P?

- A ₹ 19000
- B ₹ 14250
- C ₹ 11750
- D ₹ 9500

89. An investor invested Rs. 5 lakhs in Company Q in 2006. After one year, the entire amount along with the interest was transferred as investment to Company P in 2007 for one year. What amount will be received from Company P, by the investor?

- A Rs. 5,94,550
- B Rs. 5,80,425
- C Rs. 5,77,800
- D Rs. 5,77,500

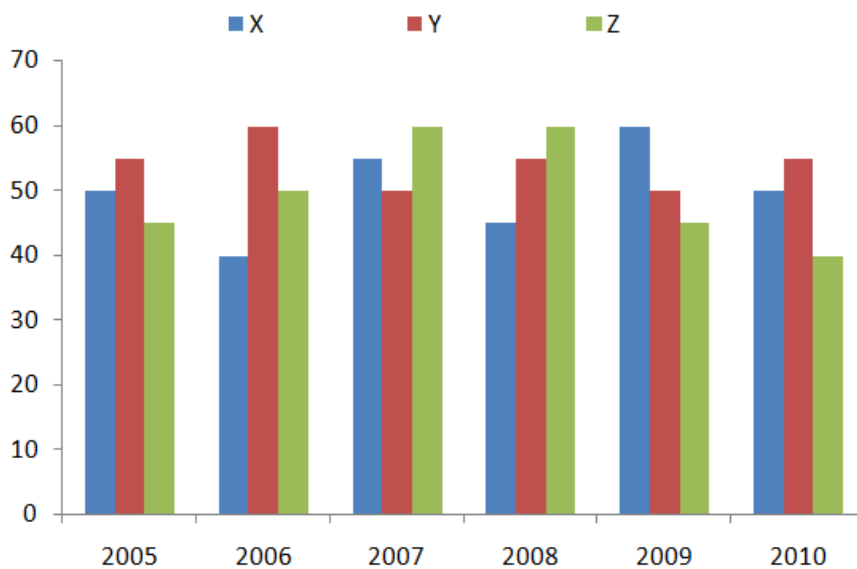
**Instructions [90 - 94 ]**

Study the graph to answer these questions.

An ice-cream company prepares three different flavours X, Y, and Z. The production of the three flavours over a period of six years has been expressed in the bar graph provided below.

**Production of three different flavours of ice-creams X, Y, and Z by a Company over the years**

**In lakh**



90. For which of the following years the percentage of rise/fall production from the previous year is the maximum for the flavour Y?

- A 2007 Decrease
- B 2008 Increase
- C 2009 Decrease
- D 2010 Increase

91. For which flavour was the average annual production maximum in the given period?

- A For X
- B For Y
- C For Z
- D Both for X and Y

92. What is the difference between the average production of flavour X in 2005, 2006 and 2007 and the average production of flavour Y in 2008, 2009 and 2010?

- A. 500000
- B. 25000
- C. 240000
- D. 80000

93. Which year shows the highest production of ice-cream?

- A 2005
- B 2007
- C 2009
- D 2010

94. The total production of flavour Z in 2007 and 2008 is what percentage of the total production of flavour X in 2005 and 2006?

- A. 130%
- B. 3.33%
- C. 33.33%
- D. 133.33%

**Instructions [95 - 99 ]**

Study the Table to answer these questions.

The following table gives the number of candidates Appeared (App.) and Qualifies (Quali.) in ABC entrance examination from different zones (I - IV in different years from 2006 - 2011)

Zone	I		II		III		IV		V		VI	
Year	App.	Quali.	App.	Quali.	App.	Quali.	App.	Quali.	App.	Quali.	App.	Quali.
2006	2989	575	2490	530	2540	430	2534	440	1008	130	2698	498
2007	2438	590	2899	520	2384	470	2653	450	1103	160	2798	610
2008	7534	608	2840	532	2053	502	2234	480	1143	190	2848	580
2009	6524	650	3600	560	2143	510	2468	500	1198	220	3008	490
2010	8746	632	3608	544	2340	544	2549	560	1208	240	2948	560
2011	8429	648	5432	612	2230	588	2630	580	1203	238	3048	534

95. The qualifying percentage from zone V is maximum in which of the following years?

- A. 2010
- B. 2011
- C. 2009
- D. 2006

96. The total number of qualifying candidates in 2009 is what per cent less than that in 2011?

- A 8.21%
- B 9.89%

- C 6.89%
- D 8.43%

97. Ratio between boys and girls for qualified and for appeared from zone IV in 2009 are 7 : 3 and 3 : 2 respectively. What is the approximate ratio between the boys qualified and girls appeared?

- A 2 : 13
- B 2 : 5
- C 1 : 28
- D 1 : 50

98. In which of the following zones is there a continuous increase in the number of students appeared as well as qualified over the years?

- A Zone II
- B Zone III
- C Zone IV
- D None of these

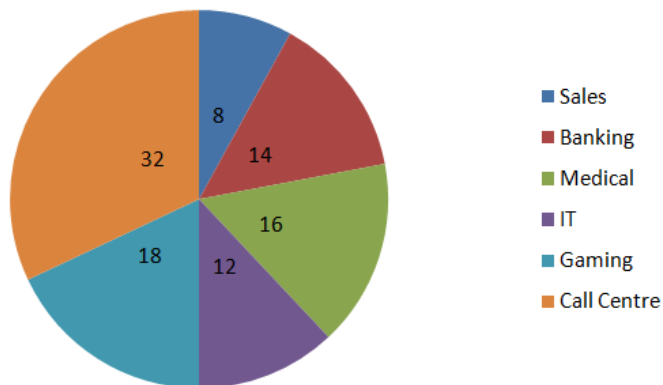
99. The number of students appeared from zone V in 2008 and 2011 together is approximately what percent less than that from zone II in 2007 and 2010 together?

- A 63.5%
- B 50.2%
- C 55.6%
- D 60%

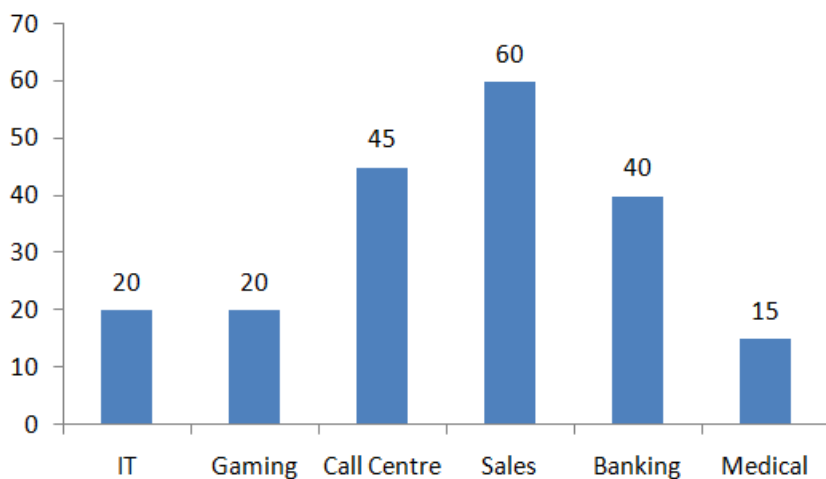
#### Instructions [100 - 104]

Study The following graphs to answer these questions.

The following piechart gives the percentage of adults from various industries working in night shifts. The bar graph shows the percentage of females from these industries working in night shifts. Total number of people = 40250



In percentage



100. What is the approximate average number of females working in night shifts in all the industries?

- A 2227
- B 4481
- C 3326
- D 2523

101. The number of females working in night shifts the gaming industry is what per cent of the total number of people working in the night shifts from all the industries taken together?

- A 5.6
- B 3.6
- C 3.2

**D** 4.4

102. What is the difference in percentage of males and females working in night shifts in these industries?

**A** 33.2

**B** 23.8

**C** 33.6

**D** None of the above

103. If the number of females working in night shifts in banking were 3206, while the number of females in rest of the industries remained unchanged, the new percentage of females working in night shifts will be \_\_. (assume that the total number of people working in night shifts remains constant)

**A** 31.56%

**B** 33.72%

**C** 23.82%

**D** Cannot be determined

104. Percentage of males working in night shifts is lowest in which of the following industries?

**A** Sales

**B** IT and Medical

**C** Banking

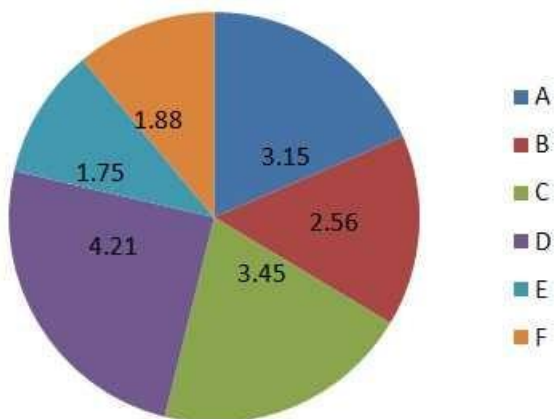
**D** Gaming

#### Instructions [105 - 109]

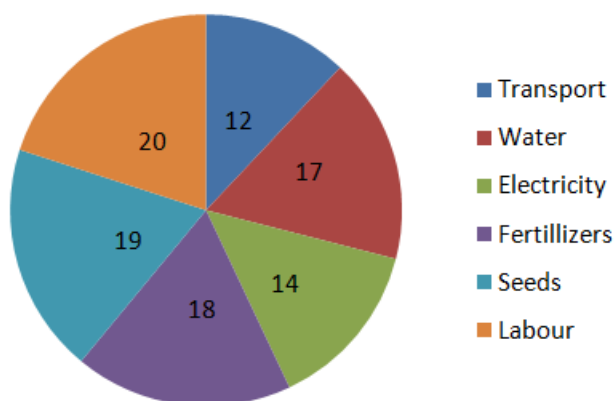
Study the graph to answer these questions.

In the year 2012, 17 lakh tonne of a vegetable was produced in a certain State. Its production status in six Districts of that State is shown in pie chart 1. The percentages of total expenditure incurred under different heads for producing this vegetable in any district is shown in pie chart II.





**Pie Chart I** (Figure in lakh tonne)



**Pie Chart II**

**105.** The monthly expenses for water in district B is more/less than the monthly expenditure for electricity in District A by ..... (the total expenditure is ₹1700 per tonne in a year).

- A. ₹ 82167 less
- B. ₹ 82167 more
- C. ₹ 986000 less
- D. ₹ 1003000 less

**106.** The total expenditure per tonne production of vegetable in these districts is ₹ 5580. The amount spent towards transport in district F is more/less than that in district E by

- A. more by ₹ 11085600
- B. less by ₹ 11085600
- C. more by ₹ 72540000
- D. less by ₹ 72540000

**107.** If the expenditure incurred in district D is 20% more than that in district B and ₹ 950000 were

spent in district B, then expenses for labour in district D are

- A. ₹ 1140000
- B. ₹ 152000
- C. ₹ 228000
- D. ₹ 190000

108. The profit earned by the sale of the vegetable in district F is 25%. The sale price being ₹10000 per tonne, how much money was spent on fertilizers?

- A ₹ 8.46 crore
- B ₹ 33.84 crore
- C ₹ 33840
- D ₹ 2707200000

109. The profit earned by the sale of the vegetable in district F is 25%. The sale price being ₹ 10000 per tonne, how much money was spent on fertilizers?

- A 38 crore
- B 27.2 crore
- C 25 crore
- D 33.875 crore

#### Instructions [110 - 114]

Each problem, consists of a problem followed by two Statements T and II. Decide whether the data in the statements are sufficient to answer the question.

110. If no student took test T more than once, how many students took test T? I. The average (arithmetic mean) of the students' scores on test T was 72. II. The sum of the students' scores on test T was 2232.

- A. if Statement I alone is sufficient but Statement II alone is not sufficient to answer the question
- B. if Statement II alone is sufficient but Statement I alone is not sufficient to answer the question
- C. if both statements taken together are sufficient to answer the question but neither Statement alone is sufficient
- D. if Statements I and II together are not sufficient, and additional data is needed to answer the

question

**111. Last year  $\frac{4}{5}$  of the applicants for a job on a police force passed the physical examination. If  $\frac{3}{4}$  of the applicants who passed the physical examination also passed the written examination, how many applicants passed both examinations?**

- 1. The number of applicants who did not pass either examination was equal to the number who passed the physical examination only.**
  - 2. There were a total of 100 applicants.**
- A. if Statement I alone is sufficient but Statement II alone is not sufficient to answer the question
- B. if Statement II alone is sufficient but Statement I alone is not sufficient to answer the question
- C. if both statements taken together are sufficient to answer the question but neither Statement alone is sufficient
- D. if Statements I and II together are not sufficient, and additional data is needed to answer the question

**112. G, P and S are animal species. What is the average life span in years of S?**

- The average life span of S is twice that of P and 5 times that of G.**
  - The average life span of G is 30 yr longer than that of P and 10 yr longer than that of S**
- A. if Statement I alone is sufficient but Statement II alone is not sufficient to answer the question
- B. if Statement II alone is sufficient but Statement I alone is not sufficient to answer the question
- C. if both statements taken together are sufficient to answer the question but neither Statement alone is sufficient
- D. if Statements I and II together are not sufficient, and additional data is needed to answer the question

**113. There are exactly 6 teams in league X. What was the total number of games played by the 6 teams last season?**

- Each team in league X played each of the other teams at least once.**
  - No team in league X played more than 7 games.**
- A. if Statement I alone is sufficient but Statement II alone is not sufficient to answer the question
- B. if Statement II alone is sufficient but Statement I alone is not sufficient to answer the question
- C. if both statements taken together are sufficient to answer the question but neither Statement alone is sufficient
- D. if Statements I and II together are not sufficient, and additional data is needed to answer the question

**114. A swimming club that sold only individual and family memberships charged ₹ 300 for an individual membership. If the club's total revenue from memberships was ₹ 480000, what was the charge for a family membership?**

- I. The revenue from individual memberships was  $\frac{1}{2}$  of the total revenue from memberships.
  - II. The club sold 1.5 times as many family memberships as individual memberships.
- A. if Statement I alone is sufficient but Statement II alone is not sufficient to answer the question
  - B. if Statement II alone is sufficient but Statement I alone is not sufficient to answer the question
  - C. if both statements taken together are sufficient to answer the question but neither Statement alone is sufficient
  - D. if Statements I and II together are not sufficient, and additional data is needed to answer the question

## Intelligence & Critical Reasoning

### Instructions [115 - 117]

Read the following information to answer these questions.

There are six students J, K, L, M, N and O. J and K belong to priya palace and the rest belong to Nisha palace. M and O are tall while other students are short. J, L and M' are identified by wearing jeans while others are wearing caps.

**115. Which two students are not wearing jeans and are short?**

- A. L and N
- B. K and N
- C. J and N
- D. K and O

**116. Which short student of Nisha Palace is wearing a cap?**

- A. O
- B. L
- C. M
- D. N

**117. Which tall student of Nisha Palace is wearing jeans?**

- A O
- B N
- C M
- D L

**Instructions [118 - 120 ]**

Read the following information to answer these questions.

There are six employees sitting in a competitive examination, namely K, L, M, N, O and P. K and L are from Dehradun while M, N, O and P are from Mangalore. N and P are tall while rest are short. L, O and P are males while rest of them are females.

**118. Who is the tall female from Mangalore?**

- A M
- B P
- C O
- D N

**119. Who is the short female from Dehradun?**

- A M
- B L
- C K
- D N

**120. Who is the tall male from Mangalore?**

- A O
- B P
- C M
- D N

**Instructions [121 - 123 ]**

Read the following information to answer these questions.

There are six books/volumes kept in a steel rack/shelf and are labelled as L, M, N, O, P and Q. M, P, N and Q have blue covers while others have red covers. L, M and O are new volumes while the rest are old volumes. L, M and N are law books while the rest are engineering books.

**121. Which two volumes are old engineering books having blue covers?**

- A**      P and N
- B**      P and O
- C**      P and Q
- D**      Q and L

**122. Which new volumes engineering book has a red cover?**

- A**      L
- B**      O
- C**      Q
- D**      P

**123. Which new volume law book has a blue cover?**

- A**      P
- B**      N
- C**      L
- D**      M

**Instructions [124 - 126]**

Read the following information to answer these questions.

Ramesh, Kailash, Avinash and Jagan are good friends studying in a school. Three of them stay away from the school and one stays nearer to it. Two study in class IV, one in class V and one in class VI. They study Hindi, Maths, Social Science and Science. One of these four friends is good at all the four subjects while another is weak in all the four subjects. Ramesh stays away from the school and is good at Maths only while Kailash is weak in Maths only and stays close to the school. Neither of these two study in class V or

VI. One who is good at all the subjects is studying in class V. Avinash is not studying in class VI.

**124. Name the boy who is good at all the subjects**

- A** Kailash
- B** Jagan
- C** Avinash
- D** Ramesh

**125. Name the boy who is weak in all the subjects.**

- A** Ramesh
- B** Kailash
- C** Jagan
- D** Avinash

**126. Which two boys are good at Mathematics?**

- A.** Jagan and Kailash
- B.** Kailash and Avinash
- C.** Ramesh and Avinash
- D.** Ramesh and Jagan

**Instructions [127 - 129 ]**

Read the following information to answer these questions.

Five friends namely Kapil, Govind, Hans, Raju and Jitu have very good characteristics and are being considered for various awards. Govind, Kapil and Hans are sincere. Kapil, Raju and Jitu are very brave. Raju, Hans and Jitu are very truthful. Kapil, Govind and Jitu are courteous.

**127. Which combination of friends is 'Courteous' but not 'Brave'?**

- A** Govind and Kapil
- B** Jitu and Hans
- C** Hans and Raju
- D** None of these

128. Which of the following persons is 'Courteous' but neither Truthful nor 'Brave'?

- A Hans
- B Raju
- C Kapil
- D Govind

129. Which of the following persons is neither 'Courteous' nor 'Brave'?

- A Kapil
- B Govind
- C Hans
- D Raju

**Instructions [130 - 132]**

Each of these questions has a statement followed by two Conclusions I and II. Consider the statement and the following conclusions. Decide which of the conclusions follows from the statement.

**130. Statement** Parents are prepared to pay any price for an elite education to their children.**Conclusions**

- All parents these days are very well off.
- Parents have an obsessive passion for a perfect development of their children through good schooling

- A if Conclusion I follows
- B if Conclusion II follows
- C if either Conclusion I or II follows
- D if neither Conclusion I nor II follows

**131. Statement** I know nothing except the fact of my ignorance.,**Conclusions**

- Writer 's knowledge is very poor.
- The world of knowledge is too vast to be explored by a single person.

- A if Conclusion I follows



- B** if Conclusion II follows
- C** if either Conclusion I or II follows
- D** if neither Conclusion I nor II follows

**132. Statement: Quality has a price tag. India is allocating lots of funds to education. Conclusions:**

- **Quality of education in India would improve soon.**
- **Funding alone can enhance quality of education.**

- A** if Conclusion I follows
- B** if Conclusion II follows
- C** if either Conclusion I or II follows
- D** if neither Conclusion I nor II follows

**Instructions [133 - 135 ]**

In each of these questions, two Statements I and II are given. These may have a cause and effect relationship or may have independent causes or be the effects of independent causes.

**133. Statements**

- International Agency for Research on Cancer (IARC) — an arm of the world health organisation (WHO) — will meet in France to take a call on bitumen, the black, oily material used to make roads — to be branded as 'probably carcinogenic, i.e., causing cancer to humans.
  - IARC has asked experts from across the globe to submit data from their research studies conducted on bitumen so as to help it to come to some conclusion.
- A.** if Statement I is the cause and Statement II is its effect
  - B.** if Statement II is the cause and Statement I is its effect
  - C.** if both the Statements I and II are effects of independent causes
  - D.** if both the Statements I and II are effects of some common cause

**134. Statements**

- In a survey conducted recently in America, almost 70% of Americans said they find it easier to care for their cars than their personal health. 40% of them said they would be more likely to address their issues with their car than their health
- Based on the above survey, the national campaign network for men's health launched this awareness through Abbott Laboratories to encourage men to visit their doctors more often to enjoy better health.

- A. if Statement I is the cause and Statement II is its effect
- B. if Statement II is the cause and Statement I is its effect
- C. if both the Statements I and II are effects of independent causes
- D. if both the Statements I and II are effects of some common cause

### 135. Statements

- The local co-operative credit society has decided to stop giving loans to farmers with immediate effect.
  - A large number of credit society members have withdrawn major parts of their deposits from the credit society.
- A. if Statement I is the cause and Statement II is its effect
  - B. if Statement II is the cause and Statement I is its effect
  - C. if both the Statements I and II are effects of independent causes
  - D. if both the Statements I and II are effects of some common cause

### Explanation:

Since most of the deposits are withdrawn by members of the society, there will be shortage of cash deposits, which is why credit society has decided to stop giving loans to farmers with immediate effect. So, the answer would be option b) if Statement II is the cause and Statement I is its effect.

### Instructions [136 - 139]

Each of these questions consists of a pair of words bearing a relationship. From amongst the alternatives, choose the pair that best illustrates a similar relationship.

### 136. VALUELESS : INVALUABLE

- A Costly : Cut-rate
- B Miserly : Philanthropic
- C Frugality : Wealth
- D Thriftiness : Cheap

### 137. PATRIOTISM : CITIZENS

- A** Morality : Truthfulness
- B** Character: Values
- C** Concentration : Students
- D** Homage : Martyrs

**138. TRAVELLER : DESTINATION**

- A** Beggar : Donation
- B** Accident : Hospital
- C** Teacher : Education
- D** Refugee : Shelter

**139. HORSE : EQUINE**

- A** Lion : Carnivorous
- B** Cat : Feline
- C** Table : Furniture
- D** Dog : Vulpine

**Instructions [140 - 144]**

Complete the series by replacing the '?' mark

**140. OAC, PBD, QCE, RDF?**

- A** SGH
- B** SHI
- C** SEG

**D SIJ**

**141. ABCD, BCDA, CDAB, ?, ABCD**

**A BADC**

**B DABC**

**C DBAC**

**D DACB**

**142. AMV, BNW, COX, ?, EQZ**

**A DMO**

**B DPY**

**C DYP**

**D DLZ**

**143. BCD, BDC, CBD, ?, DCB**

**A CDB**

**B CCD**

**C CDE**

**D DCB**

**144. XYZ, XZY, YZX, ?, ZXY**

**A XZZ**

**B YXZ**

**C YZW**

**D ZYX**

**145. There are six members in a family. A is the father of D, E is the grandfather of D. B, nephew of F is the daughter-in-law of C. F is the uncle of D. What is the relationship of C with F?**

**A Sister**

- B** Mother-in-Law
- C** Mother
- D** Grandmother

**146.** In a family there are seven persons, comprising married couples, T is the only son of M and the grandson of K. M is a widower. M and R are brothers and W is the daughter-in-law of J who is the mother of R and has grandson 'D'. How is D related to M?

- A** Son
- B** Son-in-law
- C** Nephew
- D** Brother

**147.** T, S and R are three brothers. T's son Q is married to K and they have one child Rahul blessed to them. M the son of S is married to H and this couple is blessed with a daughter Madhvi R has a daughter N who is married to P. This couple has one daughter Karuna born to them. How is Madhvi related to S?

- A** Daughter
- B** Niece
- C** Granddaughter
- D** None of these

**148.** If 27 March, 1995 was a Monday, then what day of the week was 1 November, 1994?

- A** Sunday
- B** Monday
- C** Tuesday
- D** Wednesday

**149.** The last day of a century cannot be either.

- Tuesday
- Thursday
- Saturday
- Sunday

- A I and II
- B I and IV
- C I, II and III
- D I, III and IV

150. Five senior citizens are living in a multistoried building. Mr Muan lives in a flat above Mr Ashokan, Mr Lokesh lives in a flat below Mr Gaurav, Mr Ashokan lives in a flat above Mr Gaurav and Mr Rakesh lives in a flat below Mr Lokesh. Who lives in the topmost flat?

- A. Mr Lokesh
- B. Mr Gaurav
- C. Mr Muan
- D. Mr Rakesh

**Instructions [151 - 154]**

Each of these questions has an Assertion 'A' and a Reason 'R'.

151. **Assertion (A):** A body weighs less when immersed in water. **Reason (R):** Newton's law explains the above phenomenon.

- A if both A and R are true and R is the correct explanation of A
- B if both A and R are true but R is not the correct explanation of A
- C if A is true but R is false
- D if A is false but R is true

152. **Assertion (A):** India's 'Republic Day' falls on 26th January.

**Reason (R):** Constitution of India, declaring India as a 'Republic', came into force on 26th January 1950.

- A if both A and R are true and R is the correct explanation of A
- B if both A and R are true but R is not the correct explanation of A
- C if A is true but R is false
- D if A is false but R is true

153. **Assertion (A):** India is a democracy.

**Reason (R):** India is a developing country.

- A if both A and R are true and R is the correct explanation of A
- B if both A and R are true but R is not the correct explanation of A
- C if A is true but R is false

**D** if A is false but R is true

**154. Assertion (A): India is a secular country.**

**Reason (R): Indian people can practice any faith they like.**

**A** if both A and R are true and R is the correct explanation of A

**B** if both A and R are true but R is not the correct explanation of A

**C** if A is true but R is false

**D** if A is false but R is true

## **Economic & Business Environment**

**155. Which among the following is/are correct about participatory notes or P-Notes?**

**A** They are derivative instruments

**B** They are used by Foreign Institutional Investors (FIIs) who are not registered with SEBI.

**C** They are used on Indian shares but at a location outside India

**D** All of the above

**156. The Supreme Court of India in its judgment in September, 2013 in Writ Petition (C) No. has directed that the Election Commission of India to have a "None of the Above" (NOTA) option on the ballot papers and EVMs.**

**A** 161 of 2004

**B** 121 of 2008

**C** 47 of 2005

**D** 71 of 2009

**157. Which of the following is/are the key objectives of the Rashtriya Uchchatar Shiksha Abhiyan (RUSA), the flagship program of the Government of India for higher education**

**A.** To improve access, equity and quality in higher education through planned development of higher education at the state level

**B.** It is proposed to improve the Gross Enrolment Ratio from 19% at present to 30% by 2020

**C.** It will help create new academic institutions, and expand the existing institutions, that are self-reliant in

terms of quality education and professional management.

**D.** All of the above

**158. The Government of India has recently approved the constitution of the 7th Pay Commission to implement its recommendations to revise the salary and pension, of its staff from**

**A** January 2014

**B** January 2016

**C** January 2015

**D** January 2017

**159. How much gross budgetary support is approved by the Cabinet Committee on Economic Affairs for implementation of the National AIDS Control Programme Phase-IV by the Department of AIDS Control, Ministry of Health and Family Welfare, GoI?**

**A** ₹ 8632.77 crore

**B** ₹ 7512.31 crore

**C** ₹ 9131.47 crore

**D** ₹ 6789.73 crore

**160. Which of the following is/are the salient feature(s) of the National Food Security Bill?**

**A.** 75% of rural and 50% of the urban population entitled to 5 kg of rice, wheat and coarse grains at ₹ 3, ₹ 2, ₹ 1 per kg respectively per month

**B.** Pregnant women and lactating mothers entitled to nutritious meals and maternity benefit of at least ₹ 6000 for six months

**C.** Central Government will provide funds to states in case of food grain short supply and will protect the current allocation to states

**D.** All of the above

**161. Who among the following has won the gold medal in the men,s single sculls at the Asian Senior Rowing Championships in China in 2013?**

**A.** Bajrang Lal Takhar

**B.** Swam Singh Virk

**C.** Robin P Ulahannan

**D.** Mohammed Ahmed



**162. Which one of the following states has been recently awarded by the Government of India as best state in implementing the Maintenance and Welfare of Parents and Senior Citizens (MWPSA) Act, 2007 for providing services and facilities to senior citizens?**

- A** Madhya Pradesh
- B** Kerala
- C** Himachal Pradesh
- D** Manipur

**163. Which among the following multinational companies is the world's most valuable brand of 2013 as per Interbrand's Best Global Brands report?**

- A** Google
- B** Microsoft
- C** Walmart
- D** Apple

**164. How much was the total dividend paid by NTPC Ltd at 57.5% of its paid-up capital for the financial year 2012-2013?**

- A** ₹ 1649.09 crore
- B** ₹ 4741.00 crore
- C** ₹ 2135.17 crore
- D** ₹ 3351.56 crore

**165. In which sport/game has Nikhat Zareen won the silver medal for India at the Youth World Championships in 2013?**

- A** Boxing
- B** Badminton
- C** Tennis
- D** Judo

**166. Which among the following banks celebrated its Platinum Jubilee in October 2013?**

- A.** Yes Bank

- B. ICICI Bank
- C. J&K Bank
- D. HDFC Bank

**167. Which one of the following companies has launched its flagship smart phone G2 in September 2013 in India?**

- A. Lenovo
- B. Sony
- C. Apple
- D. LG

**168. Who among the following athletes created a new marathon world record in the Berlin marathon held in September 2013?**

- A. Eliud Kipchoge
- B. Wilson Kipsang
- C. Patrick Makau
- D. Haile Gebreselassie

**169. 'Nirmal Bharat Abhiyan' (NBA) is an initiative of the**

- A. Ministry of Drinking Water and Sanitation, GoI
- B. Ministry of Minority Affairs, GoI
- C. Ministry of Information and Broadcasting, GoI
- D. Ministry of Health & Family Welfare, GoI

**170. Which among the following countries faced the first Government shutdown in seventeen years in October 2013?**

- A. USA
- B. UK
- C. France
- D. Germany

**171. Archaeological Survey of India and ..... jointly launches in October 2013, a unique initiative to take India's heritage sites online.**

- A** Google
- B** MSN
- C** Yahoo
- D** Bing

**172. The 11th India-ASEAN Summit and the 8th East Asian Summit took place in October 2013 at**

- A** Indonesia
- B** Brunei
- C** Malaysia
- D** Vietnam

**173. Who has won the men's singles title of the US open Grand Slam tennis 2013?**

- A** Andy Murray
- B** Novak Djokovic
- C** Rafael Nadal
- D** JM Del Potro

**174. The Gross Direct Tax collections in india during April-September of the FY. 2013-2014 is up by ..... and stood at ₹ 301250 crore.**

- A** 7.55%
- B** 8.15%
- C** 10.66%
- D** 13.25%

**175. India and..... have signed an MoU in October 2013 to undertake a joint feasibility study of a High Speed Railway System on the Mumbai-Ahmedabad route.**

- A** Korea

- B** Germany
- C** China
- D** Japan

**176. As per the latest report of the Ministry of Corporate Affairs, Gol, how many companies are in the official Registry as on 31st August 2013?**

- A** 13.45 lakh
- B** 8.99 lakh
- C** 2.57 lakh
- D** 10.15 lakh

**177. Who among the following has been inducted into the prestigious National Academy of Engineering, United States for his contribution to industrial development in India and the world?**

- A** Azim H Premji
- B** E Sreedharan
- C** Chandra Shekar
- D** Ratan Tata

**178. Which among the following countries has started Import of power (electricity) from India in October 2013?**

- A** Sri Lanka
- B** Bhutan
- C** Bangladesh
- D** Myanmar

**179. Which of the following Oceanographic Research Vessels has been dedicated to the nation by the Government of India in October 2013?**

- A** INS Ranvijay
- B** RV Samudra Ratnakar
- C** INS Jalashwa

**D** MV Bingo

**180. Which among the following is the top Internet Service Provider (ISP) in India in terms of marketshare (based on subscriber base) with 9.97 million?**

**A** MTNL

**B** Bharti Airtel

**C** BSNL

**D** Hathway

**181. Francois Englert and Peter W Higgs have been awarded the Nobel Prize 2013 in the field of**

**A** Medicine

**B** Literature

**C** Economics

**D** Physics

**182. Who among the following has won the 'Sakharov Human Rights Prize 2013' given by the European Union (EU)?**

**A** Malala Yousafzai

**B** Nelson Mandela

**C** Kofi Annan

**D** MS Swaminathan

**183. The BRICS Finance Ministers' and Central Bank Governors' meeting took place in October 2013 at**

**A** Washington

**B** Delhi

**C** Moscow

**D** Rio de Janeiro

**184. As per the latest telecom subscription data (July 2013) released by TRAI, BSNL and MTNL, the two PSN operators hold of the wireless market share (based on subscriber base).**

- A** 11.70%
- B** 88.30%
- C** 43.17%
- D** 69.14%

**185. Who has won the 100th edition of the Tour de France Cycling Championships?**

- A** Marcel Kittel
- B** Chris Froome
- C** Marco Pantani
- D** Jan Ullrich

**186. "International Literacy Day" is annually celebrated by UNESCO on**

- A** April 22
- B** November 14
- C** August 9
- D** September 8

**187. Who among the following former Indian cricketers has become the brand ambassador for the National Tobacco Control Campaign of the Government of India?**

- A** Saurav Ganguly
- B** Anil Kumble
- C** Rahul Dravid
- D** Md Azharuddin

**188. Recently, the Department of Post, Ministry of Communication and Information Technology has allotted a Customized Pin Code ..... to the Supreme Court of India.**

- A** 110251
- B** 110201

**C** 110301

**D** 110222

**189. In September 2013, where did the meeting between Indian and Pakistan Prime Ministers take place?**

**A** Washington

**B** London

**C** New York

**D** Brussels

**190. The President of India launched the September 2013 which is expected to provide an identity to Khadi.**

Recently, the Department of Post, Ministry of Communication and Information Technology has allotted a Customized Pin Code ..... to the Supreme Court of India. Khadi Retail Showroom

**A.** Khadi Online Shop

**B.** Khadi Association Chapter

**C.** Khadi Mark

**191. Who is the author/writer of the.... recently released book 'Gandhi Before India'?**

**A** Charles Di Salvo

**B** Joseph Lelyveld

**C** Ramachandra Guha

**D** Kuldip Nayar

**192. Which one of the following countries has Wont} Asia Cup hockey tournament held in 2013?**

**A** Korea

**B** Pakistan

**C** India

**D** Malaysia

**Answer: A**

**193. Mayaram Committee was formed by the Government of India to examine the**

- A** alleged irregularities in the functioning of Ind Olympic Association
- B** alleged irregularities at the National Spot Exchange Ltd (NSEL)
- C** progress in 2G spectrum scamcase
- D** progress in coal block allocationscam

**Answer: B**

**194. The 9 edition of 'Naseem Al Bahr , ' the biennial naval exercise, took place between the India, Navyand**

- A** Bangladesh Navy
- B** United Arab EmiratesNavy
- C** Royal Omani Navy
- D** Indonesian Navy



# Answer Keys

Language Comprehension	
Question No.	Answer Key
1	C
2	B
3	C
4	D
5	C
6	A
7	A
8	C
9	B
10	D
11	C
12	C
13	D
14	C
15	C
16	C
17	C
18	B
19	C
20	C
21	C
22	A
23	B
24	A
25	D
26	C
27	C
28	C
29	D
30	C
31	D
32	B
33	B
34	C

Mathematical Skills	
Question No.	Answer Key
35	C
36	D
37	A
38	B
39	C
40	B
41	A
42	B
43	B
44	D
45	B
46	B
47	D
48	B
49	B
50	B
51	A
52	B
53	A
54	A
55	B
56	A
57	A
58	D
59	B
60	C
61	C
62	C
63	C
64	B
65	D
66	A
67	A
68	A
69	C
70	B
71	A
72	A
73	A
74	B

Data Analysis & Sufficiency	
Question No.	Answer Key
75	A
76	A
77	A
78	B
79	A
80	A
81	C
82	C
83	C
84	A
85	D
86	C
87	D
88	D
89	B
90	A
91	B
92	B
93	B
94	D
95	A
96	A
97	B
98	D
99	A
100	A
101	B
102	C
103	A
104	A
105	C
106	C
107	C
108	D
109	B
110	C
111	B
112	C
113	D
114	C

Intelligence & Critical Reasoning	
Question No.	Answer Key
115	B
116	D
117	C
118	D
119	C
120	B
121	C
122	B
123	D
124	C
125	C
126	C
127	D
128	D
129	C
130	D
131	B
132	A
133	D
134	A
135	B
136	B
137	C
138	D
139	B
140	C
141	B
142	B
143	A
144	B
145	A
146	C
147	C
148	C
149	C
150	C
151	C
152	A
153	B
154	B

Economic & Business Environment	
Question No.	Answer Key
155	D
156	A
157	D
158	C
159	A
160	D
161	B
162	A
163	D
164	B
165	A
166	C
167	D
168	B
169	A
170	A
171	A
172	B
173	C
174	C
175	D
176	A
177	D
178	C
179	B
180	C
181	D
182	A
183	A
184	A
185	B
186	D
187	C
188	B
189	C
190	D
191	C
192	A
193	B
194	C