

# IBSAT - Model Paper-1

## Section I

### Verbal Ability

**I. Directions:** In the following questions, each word is followed by five options. Choose the option which is the closest **synonym** of the given words. While choosing your answer, keep in mind the finer distinctions in the meaning and usage of certain words.

1. INCIPIENT

- (a) Sharp                      (b) Tasteless                      (c) Initial                      (d) Sociable                      (e) Scarce

2. ABROGATE

- (a) Archaize                      (b) Repeal                      (c) Replenish                      (d) Dodge                      (e) Polish

3. CADUCITY

- (a) Echelon                      (b) Travesty                      (c) Attitude                      (d) Senility                      (e) Secret

4. ALACRITY

- (a) Adulation                      (b) Sense                      (c) Panic                      (d) Enthusiasm                      (e) Anarchy

5. FROLIC

- (a) Gambol                      (b) Concur                      (c) Approach                      (d) Collide                      (e) Restrain

**II. Directions:** In the following questions, each word is followed by five options. Choose the option which is the closest **antonym** of the given words. While choosing your answer, keep in mind the finer distinctions in the meaning and usage of certain words.

6. GAIETY

- (a) Accusation                      (b) Affection                      (c) Salutation                      (d) Seriousness                      (e) Aversion

7. MAWKISH

- (a) Graceful                      (b) Tense                      (c) Descriptive  
(d) Sophisticated                      (e) Unsentimental

8. COVENANT

- (a) Reprieve                      (b) Evidence                      (c) Accordance                      (d) Atrocity                      (e) Refusal

9. SKIRT

- (a) Deport                      (b) Address                      (c) Brook                      (d) Reverse                      (e) Pervert

10. EXCULPATE

- (a) Integrate                      (b) Convict                      (c) Transform                      (d) Dominate                      (e) Illuminate

**III. Directions:** In the following questions, the first two words are related in a particular manner. You have to choose a word from the options so that a new pair of words is formed where the relation is the same as that of the first pair of words. You are required to consider the secondary meaning of certain words while choosing an answer.

11. Missile : Trajectory :: Satellite :

- (a) Pitch                      (b) Orbit                      (c) Space                      (d) Horizon                      (e) Sky

12. Review : Critic :: Drama :  
 (a) Musician (b) Poet (c) Playwright (d) Actor (e) Novelist
13. Actor : Soliloquy :: Musician :  
 (a) Song (b) Solo (c) Movie (d) Tragedy (e) Duet
14. Crow : Boastful :: Pout :  
 (a) Witty (b) Sulky (c) Blush (d) Unhappy (e) Sly
15. Dog : Puppy :: Lion :  
 (a) Lioness (b) Den (c) Panther (d) Burrow (e) Cub

**IV. Directions:** Fill in the blanks with the words that **best** fit the meaning of the sentence as a whole.

16. Cord-blood banking is a process of \_\_\_\_\_ extra blood in the umbilical cord of the baby that is \_\_\_\_\_ in stem cells.  
 (a) preserving ... rich (b) collecting ... pure  
 (c) controlling ... contaminated (d) developing ... full  
 (e) gathering ... low
17. Healthy competition acts as a \_\_\_\_\_ for all players to improve their performance, \_\_\_\_\_ both the individual and the team.  
 (a) medicine ... valuing (b) catalyst ... bringing  
 (c) spur ... benefitting (d) panacea ... motivating  
 (e) boost ... clubbing
18. Dharma \_\_\_\_\_ adherence to moral standards and \_\_\_\_\_ a virtuous life.  
 (a) applies ... involving (b) employs ... relating  
 (c) considers ... emerging (d) implies ... leading  
 (e) believes ... rising
19. Many breakfast cereals are \_\_\_\_\_ with vitamin supplements, some of these cereals provide hundred percent of the \_\_\_\_\_ daily requirement of vitamins.  
 (a) filled ... suggested (b) fortified ... recommended  
 (c) supplemented ... needed (d) complimented ... required  
 (e) strengthened ... compulsory
20. All the teachers \_\_\_\_\_ that Sunita would stand at the top in the examination, but she \_\_\_\_\_ short of their expectations.  
 (a) thought ... fell (b) dreamt ... achieved  
 (c) presumed ... failed (d) felt ... ran  
 (e) anticipated ... reached

V. **Directions:** In the following questions, each sentence is divided into four parts (a), (b), (c) and (d). Find out which part of the sentence contains an error. If there is no error, mark your answer as (e).

21. Monika saw/ a girl in the mall/ who resembles like her/ elder sister. No error  
(a) (b) (c) (d) (e)
22. One of/ my colleague/ has bought/ a car. No error  
(a) (b) (c) (d) (e)
23. A few years ago,/ a car fuelled by/ solar energy/ would be inconceivable. No error  
(a) (b) (c) (d) (e)
24. India is still a long way behind China,/ in evoking, by its very rise,/  
(a) (b)  
strong passions of one kind or another/ between the major powers of the world. No error  
(c) (d) (e)
25. Ancient trees are ecology treasures/ because they provide unique/ habitats for rare plants,/  
(a) (b) (c)  
insects, birds and mammals. No error  
(d) (e)

VI. **Directions:** In each of the following questions, a part of the given sentence has been underlined as this part **may have** an error. The first option is the same as the underlined part in the given sentence. Choose this option if you think that the underlined part has no error. Otherwise, choose the option that rectifies the error in the underlined part of the given sentence.

26. He was bitten by a snake walking in the garden.  
(a) walking in the garden (b) in the garden since he walked  
(c) while in the garden he walked (d) in the garden while having walked  
(e) while he was walking in the garden
27. In an industrial society, mental ability is more important than of physical strength.  
(a) is more important than of physical strength  
(b) is more than the physical strength important  
(c) than that of physical strength is more important  
(d) than physical strength is most important  
(e) is more important than physical strength
28. Every human being has a right to live and find the resources to feed, clothe and a house himself.  
(a) a house himself (b) housed himself  
(c) house themselves (d) house himself  
(e) himself a house

29. Paleontologists believe that fragments of a primate jawbone unearthed in Burma and estimated at forty to forty four million years old provide evidence of a crucial step along the evolutionary path that led to human beings.
- at forty to forty four million years old provide evidence of a crucial step
  - as being forty to forty four million years old provides evidence of a crucial step
  - that it is forty to forty four million years old provided evidence of a crucial step
  - to be forty to forty four million years old provide evidence of a crucial step
  - as forty to forty four million years old provides evidence of what was a crucial step

30. He is working very hard with a view to attaining good marks in the examination.

- with a view to attaining
- in a view for attaining
- in view to attain
- with a view of attaining
- with view of attain

**VII. Directions:** *In the following questions, different parts of a sentence/passage have been jumbled. Choose the option that represents the **best** sequence to make the sentence/passage coherent and meaningful. Ignore punctuation marks.*

31. P: But for spiritual knowledge mere memory of holy texts will be of no use in passing the texts  
 Q: There are examinations at schools which a pupil can pass by cramming the texts by the power of memory  
 R: What the text says has to be reflected upon and experienced by the speaker  
 S: A competent guru alone can provide the necessary guidance to an earnest disciple

- QSRP
- PSRQ
- QRPS
- SPQR
- QPRS

32. P: By people around us in times of crisis like all other things  
 Q: Whether at work or in private life we also feel the need to be helped and supported  
 R: We all want to be respected, admired and held in high esteem  
 S: In life, respect and support of people have to be earned too

- RPSQ
- RQPS
- PRSQ
- QPSR
- RQSP

33. P: And have implemented many schemes to improve women's health  
 Q: Yet health indices for girls and women compare much less favorably with those for boys and men  
 R: Successive governments have recognized the inequalities in health indices  
 S: There has been significant improvement in the health education and employment status of women in India over time

- PSRQ
- PRSQ
- SQRP
- SRPQ
- PRQS

34. P: Neutrinos can thus escape from regions of space where light and other kinds of electromagnetic radiation are blocked by matter  
 Q: Virtually everything astronomers knew about objects outside the solar system is based on the detection of photons-quanta of electromagnetic radiation  
 R: With no electric charge and negligible mass the neutrino interacts with other particles so rarely that a neutrino can cross the entire universe, without being absorbed or even deflected  
 S: Yet there is another form of radiation that permeates the universe: neutrinos

- QSRP
- PSRQ
- SPRQ
- SRPQ
- QPRS

35. P: And more frequent circulation of artefacts among them  
 Q: A promising future lies in building a trustworthy  
 S: Partnership between the emerging museums and  
 R: The established ones that will ensure a better conservation
- (a) QPSR            (b) RPQS            (c) RQSP            (d) QSRP            (e) QRSP

**VIII. Directions:** Choose a suitable **one-word substitute** for the given phrase from the options under each question.

36. Someone who manages property or other affairs for someone else.  
 (a) Heir            (b) Nominee            (c) Steward            (d) Proprietor            (e) Tenant
37. The government by the populace or mob rule.  
 (a) Democracy            (b) Ochlocracy            (c) Bureaucracy            (d) Aristocracy            (e) Plutocracy
38. A belief that all events are predetermined and therefore inevitable.  
 (a) Fatalism            (b) Existentialism            (c) Realism            (d) Pragmatism            (e) Naturalism
39. Willing to take risks or to do something shocking.  
 (a) Generous            (b) Diplomatic            (c) Candid            (d) Audacious            (e) Atrocious
40. The facility where wild animals are housed for exhibition.  
 (a) Pen            (b) Kennel            (c) Basinet            (d) Menagerie            (e) Crib

**IX. Directions:** Choose the option that **best** expresses the meaning of the given idiom/phrase.

41. She took *into her head* to leave her job.  
 (a) A sudden idea            (b) Decided half-heartedly  
 (c) After careful thought            (d) Think deeply  
 (e) Was contemplating
42. I *have a hunch* that England will win the next world cup in cricket.  
 (a) Have an intuitive feeling            (b) Very sure  
 (c) Make an intelligent guess            (d) Have reasons to believe  
 (e) No scope for speculation
43. She has had *second thoughts* about going to Delhi.  
 (a) Decided to go elsewhere            (b) Is considering her decision  
 (c) Planned very carefully            (d) Is not interested  
 (e) Very much interested
44. It is better to have one friend who is *as true as steel* than to have fifty acquaintances who refuse to recognize you in your hour of need.  
 (a) As strong as steel            (b) Physically and mentally fit  
 (c) With you always            (d) Very loyal and dependable  
 (e) Loving and affectionate



## Section II

### Reading Comprehension

**Directions:** Each passage is followed by questions based on its content. Answer the questions on the basis of what is directly stated in each of the passages or can be inferred from it.

#### Passage I

Our national aim is to make India a highly prosperous country for all its citizens, not just for a handful of people. For that, it is necessary to have a high degree of industrialization. Rapid industrialization alone can generate the wealth we need for the welfare of our people; abolish poverty and unemployment, which are the main causes of crime and terrorism; and give us respect in the world community. For industrialization, the development of science is necessary, and for that freedom is necessary—freedom to think, freedom to write, freedom to discuss, freedom to criticize, and freedom to dissent.

The growth of science requires certain supportive values, particularly liberty. This is because the thought process cannot develop without freedom. The values of a scientific community, namely pluralism, tolerance, individual freedom, and free flow of information, are very similar to the values of democratic society. In order to govern themselves, scientists must have freedom, which is necessary for innovation and creativity.

The method of Shastrarthas was developed in ancient India. These were debates in which the thinkers of those times had full freedom to speak and to criticize their opponents in the opponent's presence and also in the presence of a large assembly of people. It was this freedom to freely discuss and criticize that resulted in a tremendous growth of knowledge. With the aid of science, we built mighty civilizations, beginning with the Indus Valley Civilization at a time people in Europe were living in forests.

Modern European history is also instructive. England was the first country in the world to industrialize and modernize. Parliament's triumph laid the foundation of freedom and civil liberty in England, which was necessary to create the atmosphere science needs to prosper.

In India, if we are to progress and rise as a world power, we must spread the scientific outlook to every corner of our country and destroy the superstitions—the belief in astrology and palmistry and the feudal ideas of casteism and communalism. Science is that knowledge by which we can understand nature and human society and use the knowledge for our benefit. In India, there was an atmosphere of liberal freedom in view of the fundamental rights guaranteed by the Constitution. This helped the growth of science and technology, because it created an atmosphere of freedom where people, including scientists, could freely discuss, dissent, debate and criticize.

51. For India to progress and rise as a world power, we must
- (a) Follow the feudal ideas of casteism and communalism
  - (b) Believe in astrology and palmistry
  - (c) Spread the scientific outlook to every part of our country
  - (d) Create an atmosphere of freedom
  - (e) Understand nature and use the knowledge for our benefit
52. Choose from the following words, as used in the passage, a one-word substitute for the phrase, 'an irrational belief arising from ignorance or fear'.
- (a) Debate                      (b) Superstition                      (c) Pluralism                      (d) Dissent                      (e) Liberal
53. Why does the author mention about shastrarthas in the passage?
- (a) To show how the method of shastrarthas was developed in ancient India
  - (b) To bring to light that the function of free speech resulted in a tremendous growth of knowledge
  - (c) To show how the thinkers of earlier times criticized their opponents in the presence of large audience
  - (d) To highlight the significance of shastrarthas in our epics and other classical literature
  - (e) To illustrate the importance of debates in which the thinkers of those times had full freedom to speak

54. Choose the true statement in the context of the passage.
- There will be tremendous progress in the country if harsh and draconian laws are passed
  - The national aim of our country is to combat terrorism and abolish poverty
  - The values of scientific community are different from the values of democratic society
  - Communalism and feudalism are important pillars for the progress of our country
  - Rapid industrialization alone can generate wealth for the welfare of the people
55. When the Indus Valley civilization flourished in India, Europeans were
- Fighting for liberty
  - Struggling to assert their fundamental rights
  - Still living in forests
  - Building a democratic society
  - Working towards modernization and industrialization
56. It can be inferred from the passage that
- Crime and terrorism can be terminated only by the elimination of poverty and unemployment
  - India stands next to England in terms of industrialization and modernization
  - Parliament's triumph laid the foundation of freedom and civil liberty in India
  - Europeans followed the methods of shastrarthas even before Indians were aware of it
  - Scientific values are different from democratic values
57. What according to the passage helps scientists to govern themselves?
- |                         |                   |             |
|-------------------------|-------------------|-------------|
| (a) Innovative thinking | (b) Creative mind |             |
| (c) Assertiveness       | (d) Tolerance     | (e) Freedom |
58. What is the apt title of the passage?
- Terrorism and its After Effects
  - Significance of Liberty and Democracy in India
  - Fundamental Rights and Economic Progress
  - Scientific and Economic Progress in India
  - Values of Democratic Society

### Passage II

As all countries prepare to celebrate World Wetlands Day on 2<sup>nd</sup> February, on the theme, Wetlands Connect Us all, there is great expectation that India will get serious about saving its vanishing water bodies. In just a single decade from 1991, an estimated thirty eight percent of freshwater wetlands have been lost. If further losses are to be prevented, the central government must quickly put in place a protection framework. India has most wetland types ranging from Himalayan lakes, riverine flood plains, and mangroves to estuaries and coastal backwaters. These national assets provide a range of services, notably livelihood support, water security, flood prevention, and sustenance of biodiversity. Yet, they remain badly neglected.

In July, 2008, in a move forward, the Ministry of Environment and Forests published a draft notification on a regulatory framework for conservation of wetlands. Critical to this framework are the Wetlands (conservation and management) Rules, 2008. Several constructive suggestions have come in on the proposed rules. Kerala's State Biodiversity Board and research bodies have sought legal support for identification and protection of wetlands of all sizes, and their judicious use by local communities. Clear, actionable rules are vital to stop the life-sapping influx of sewage, industrial waste, pesticides, building debris and urban solid waste into these fragile sites.

Although India is party to the Ramsar Convention on wetlands, it does not have strong domestic laws other than those governing sanctuaries and national parks. The Salim Ali Centre for Ornithology and Natural History reported four years ago that close to two hundred sites deserve to be listed under the Convention, among 655 notable national sites. Disappointingly, the national Ramsar site tally stands at a mere 25. Even the listed sites do not enjoy full safeguards. A case in point is Assam's famed Deeper Beel, which suffers municipal solid waste dumping from Guwahati.

Hope for wetlands now hinges on the availability of legal provisions, and the involvement of scientists, state governments, local bodies and communities in conservation. The proposed rules rightly seek to prohibit the conversion of wetlands to other use, reclamation and the dumping of waste but they do fall short in some respects. The protection of wetlands also demands making polluters, including government departments, liable for penalties without exception. The time to act is now.

59. Which of the following pairs have synonymous words?
- (a) Local and Domestic (b) Vital and Critical  
(c) Waste and Fragile (d) Legal and Judicious  
(e) Solid and Strong
60. Which of the following words, used in the passage, substitutes the phrase, 'the conversion of wasteland into useful habitation or cultivation'?
- (a) Conservation (b) Biodiversity (c) Reclamation (d) Sustenance (e) Dumping
61. What is the main concern expressed by the author in the Indian scenario?
- (a) Indians are not making use of the wetlands in a proper way  
(b) Indians are least bothered about the rich wetlands in the country  
(c) Indians are not serious about celebrating World Wetlands Day  
(d) Indians should get serious about saving the country's rapidly disappearing water bodies  
(e) Indians should strictly abide by the Ramsar Convention on wetlands
62. Identify the statement that is not true in the context of the passage.
- (a) India does not have strong laws for governing sanctuaries and national parks  
(b) India does not have strict laws for maintaining wetlands  
(c) The proposed rules to prohibit the conversion of wetlands fail to meet in some respects  
(d) The listed sites by Ramsar convention do not enjoy full protection  
(e) The national assets which provide a wide range of services are badly neglected
63. What has to be done to prevent further loss to wetlands?
- (a) More number of scientists should be involved in the conservation process  
(b) The central government must quickly introduce a protection framework  
(c) Polluters should be made liable for penalties without any exception  
(d) The government departments should immediately identify the different types of wetlands  
(e) The central government must frame stringent laws for the protection of wetlands
64. What is the role of Ramsar Convention?
- (a) To tally all the wetlands of India  
(b) To frame laws for wetlands on legal provisions  
(c) To govern the sanctuaries and national parks  
(d) To safeguard the wetlands  
(e) To see which sites deserve to be listed under the Convention
65. What are the advantages of these national assets?
- (a) They provide sustenance of biodiversity  
(b) They prevent floods (c) They provide water  
(d) They provide livelihood support (e) All the above
66. Pick out the apposite heading that would best sum up the central theme of the passage.
- (a) Conversion of Wetlands (b) Wetlands – The National Assets  
(c) Wetlands vs Biodiversity (d) We Lost the Grace Period  
(e) Protect the Wetlands

### Passage III

Durgabai Deshmukh's life is an illustration of what determination and dedication could achieve even when faced with seemingly insurmountable obstacles. She laid the foundations of organized voluntary efforts and lobbied for state recognition and support to these institutions. In 1922, she started Hindi classes in the Balika Hindi Pathashala. The mini-school was to be the nucleus of the future Andhra Mahila Sabha, the mammoth social welfare organization, which eventually had service centres in Madras, Hyderabad and several other districts of Andhra Pradesh. The Madras institution, started in 1937, organized many programmes such as condensed courses of education for adult women, nursery schools and crèches for working mothers, milk distribution for poor children, training of auxiliary nurse midwives and maternity centres.

When her family settled down in Madras, the centre at Dwaraka, known as the Little Ladies Club, was formed. In 1939, Durgabai joined the Madras Law College and simultaneously started her work in the women and children's wing of Chennapuri Andhra Maha Sabha. The celebration of the silver jubilee of the Andhra Maha Sabha led to the emergence of the Andhra Mahila Sabha. In 1946, Mahatma Gandhi laid the foundation stone for the first building of the Andhra Mahila Sabha. That marked the beginning of the establishment of numerous educational institutions at the primary, secondary, professional and tertiary levels.

Durgabai's name is integrally linked with the Andhra Mahila Sabha. This grand institution has completed hundred years of useful service in the field of social welfare. The services organized by it are in the fields of health, medical care, nursing and education. The Sabha has contributed to the cause of adult education and literacy including functional literacy and non-formal education for rural women. Durgabai has been the inspiration for many dedicated, spirited, selfless and able voluntary workers, both men and women.

Durgabai was a member of the Constituent Assembly. By the time India attained Independence, she had established herself as a criminal lawyer and played an active role in drafting and enacting the Hindu Code Bill. Her efforts to elevate the status of women were evident in her involvement with Parliamentary Bills. In 1952, she was appointed a member of the Planning Commission but relinquished the post, as her husband, C.D. Deshmukh, was also a member. In 1953, she became the chairperson of the Central Social Welfare Board. In 1959, the government appointed her chairperson of the National Committee on Education.

Her autobiographies, *Chintamani and I* and *The Course of My Life*, were dedicated to Nehru. Her encyclopaedia, *Social Welfare in India*, is a valuable reference work for researchers even today. In 1979, *Stone that Speaketh*, her history of the Andhra Mahila Sabha, was released. It gives an account of the cornerstones of the institution laid by leading personalities over a period of fifty seven years, from 1921 to 1977. Many awards and accolades came her way. She received the UNESCO Peace award for her work in spreading literacy. She received the Padma Vibhushan. The Paul G. Hoffman Award for bringing about social change in India and contribution to economic growth was conferred on her. She received the Nehru Literacy Award for services in the field of adult education. She is perhaps best known for her work with the Andhra Mahila Sabha. But beyond that structure, her legacy lies in the unseen and intangible spirit of sacrifice, dedicated work, leadership qualities and stern discipline.

67. The attempts to lift up the position of women could be seen through her
- (a) Establishment of educational institutions for women
  - (b) Involvement with Parliamentary Bills
  - (c) Selfless work in the areas of primary and secondary education
  - (d) Tireless work as a criminal lawyer
  - (e) Services organized in the field of nursing and education
68. Choose the statement that is true about Andhra Mahila Sabha.
- (a) Nehru laid the foundation stone for the first building of Andhra Mahila Sabha
  - (b) Mahatma Gandhi was the founder of Andhra Mahila Sabha
  - (c) Andhra Mahila Sabha has completed its centenary celebrations
  - (d) The first building of Andhra Mahila Sabha was later converted into a maternity center
  - (e) Andhra Mahila Sabha has rendered yeoman service exclusively in the field of tertiary education

69. In the sentence, 'the mini-school was to be the nucleus of the future', the word 'nucleus' relates to
- The central and the most important part
  - A supporting framework
  - Formally laid down or imposed
  - Exceedingly large or extensive
  - The center of attraction
70. Why did Durgabai give up the post as a member of the Planning Commission?
- She was already a member of the Constituent Assembly
  - She was busy drafting the Hindu Code Bill
  - She wanted to devote her fulltime to women's empowerment
  - To become the chairperson of the Central Social Welfare Board
  - Her husband also was a member of the Planning Commission
71. From the life of Durgabai, one can learn that
- Failures are stepping stones for success
  - Determination and dedication are the keys for attaining success
  - The journey of thousand miles begins with a small step
  - Service to mankind is service to God
  - Failure and success are like the two sides of the same coin
72. A year before India attained Independence, the foundation stone was laid for the first building of the Andhra Mahila Sabha. This momentous event
- Motivated Durgabai to work for hapless women
  - Culminated in establishing Andhra Maha Sabha
  - Marked the beginning of non-formal education for rural women
  - Led to the founding of several educational institutions of all levels
  - Resulted in starting a social welfare organization and a crèche
73. Pick out a suitable word, as used in the passage, which means, 'a day nursery for young children and babies'.
- Maternity centre
  - Service centre
  - Crèche
  - Social Welfare organization
  - Primary school
74. The award bestowed on her for bringing about social change in our country and for her contribution in economic growth was
- The Padma Vibhushan
  - The UNESCO Peace Award
  - The Paul G. Hoffman Award
  - The Nehru Literacy Award
  - None of the above
75. The book that acts as a reference guide for many research scholars even today is
- Chintamani and I
  - The Course of My Life
  - Social Welfare in India
  - Corner Stone
  - Stone that Speaketh

#### Passage IV

The State in India first accepted the legal responsibility to look after children, who lack responsible adult protection, almost a century back, in the 1920s, when the first Children's Acts were enacted in Madras and Bombay presidencies. The theoretical premise of such colonial legislation was to provide vulnerable children care and protection by the State. Its language and provisions were overlaid with the bias that the child who is deprived of family care is 'bad', or at least potentially bad, hence he/she needs to be safely locked up, for the sake of the larger society, as much as the child.

Later, in 1960, the Parliament enacted a central law, the Children's Act, to safeguard the children from abuse

and exploitation. The law makes an important distinction between children who are ‘in need of care and protection’ and those who are ‘in conflict with the law’. In fact, all children need care and protection, even if they are in conflict with the law. Separating the two and enacting different ways of dealing with these two categories of children, strengthens the stigmatizing of children who are charged with an offence. It is welcome, even though belated, that the Government of India formulated a comprehensive Integrated Child Protection Scheme, which seeks to address many of these limitations to its programmes of child protection, including the ‘overbearing’ focus on institutional services.

One limitation of even the new scheme is that it does not provide alternatives to closed, jail-like institutions in which children in conflict with the law are still held, isolated from their family and the community, and deprived of humane treatment, recreation, childhood, counseling and rehabilitative services. If a child is endangered because of extreme poverty of the family, it provides for sponsorship of the child with a monthly grant for care within the family. It also provides for universalizing Childline, to create a national database and 24/7 emergency service, to link children in difficulty to emergency and long-term care and rehabilitation services.

Even for children who need to be separated from their families, or have been abandoned or have lost their families, it strengthens alternatives like foster care, in which single women or couples are supported to provide foster care to these children in supervised and supported family units. For street children, it provides for open shelters extending comprehensive care. Although this Integrated Child Protection Scheme—which would be a great step ahead for our vulnerable children—was approved in principle at the start of the XI Plan by the Planning Commission, it has not been approved by the cabinet, even after two years of the Plan period. Its budget of thousand crore rupees is a significant advance over the paltry allocations of the past, but is still meagre for an estimated hundred million children, who are gravely at risk.

The government has been unable to converge resources such as of education and labor departments; therefore, it will still not enable, for instance, the several hundred open shelters and foster care homes required for street children in every major city. Even so, the Integrated Child Protection Scheme marks a significant step ahead for our development as a humane polity. Any people can be judged by the way it treats individuals who are most powerless and vulnerable. It is something that we all, in partnership, can and should change. It can brook no further delay.

76. What is the limitation of the new scheme?
- (a) It does not provide counseling and rehabilitative services to the children
  - (b) It failed to prevent children from falling into difficult circumstances
  - (c) It did not succeed in identifying families in which children are susceptible to violence
  - (d) There is no provision made for alternatives to jail-like institutions, in which juvenile delinquents are held in isolation
  - (e) There is no mention about the street children
77. The law, despite having drawbacks, also has a favorable scheme for the poor. What is it?
- (a) It established a committee to gather all the street children and put them in rehabilitation homes
  - (b) The children who lost their parents in fire and disaster were supported with comprehensive care
  - (c) To build several hundred open shelters and foster care homes required for street children
  - (d) It provides funding for the child with a monthly grant for care within the family
  - (e) It proposes support and foster care for single women who are poor
78. How was the first Children’s Act different from the law enacted in 1960?
- (a) The State provided care and protection to susceptible children
  - (b) Children’s education became more prominent in the enactment of the law
  - (c) The law was meant for the children who were deprived of freedom
  - (d) It gave protection to the children suffering from abuse and victimization
  - (e) Maltreated children were given priority in the law
79. What is the close synonym of ‘foster’ as used in the passage?
- (a) Express                      (b) Augment                      (c) Nurture                      (d) Expand                      (e) Isolate

80. What was the distinction made in the enactment of law regarding the child's protection?
- (a) The poor children and the children with single parent have different child protection schemes
  - (b) The children who are supervised by parents and those who are abandoned are governed by separate laws
  - (c) The abused children and children who are exploited are addressed separately in the law
  - (d) The children in conflict with the law, and others who need care and protection, are treated differently
  - (e) The children under the Child Protection Scheme and those who are not covered under this scheme have different laws

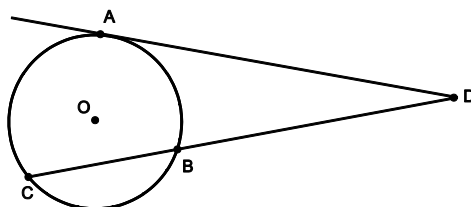
**END OF SECTION II**

### Section III

## Quantitative Aptitude

**Directions:** There are 30 questions in this section. Each question is followed by five alternatives (a), (b), (c), (d) and (e). You are required to choose the **best** alternative from these five alternatives.

81. In the figure below, AD is a tangent and CD is a secant such that  $CD \times BD = 225$  cm. If radius of the circle is 8 cm, then what is the length of OD where O is the centre of the circle?



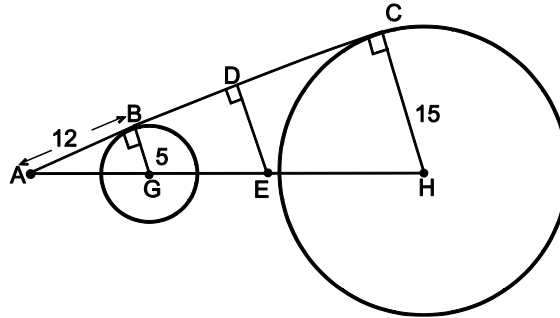
- (a) 15 cm                      (b) 16 cm                      (c) 17 cm                      (d) 21 cm                      (e) 24 cm
82. **a** and **b** are prime numbers such that  $a < b < 150$  and  $(a + b)$  is a factor of 3087. How many values of **b** are possible?
- (a) 1                              (b) 3                              (c) 4                              (d) 5                              (e) 6
83. The concentration of water in dry grapes is 25% and the concentration of water in fresh grapes is 90%. How many kilograms of fresh grapes are required to obtain 20 kg of dry grapes?
- (a) 72kg                      (b) 120 kg                      (c) 150 kg                      (d) 180 kg                      (e) 200 kg
84. If **a**, **b**, **c**, **d** and **e** are five consecutive odd numbers, then  $(a^2 + b^2 + c^2 + d^2 + e^2)$  is always divisible by
- (a) 2                              (b) 3                              (c) 4                              (d) 5                              (e) 6
85. A square plot of ground is surrounded by a gravel path of 10 ft wide, the outside boundary of the gravel path also forming a square. It is desired that the width of the path be doubled, and it is found that  $1\frac{2}{5}$  times as much gravel is required for the extension as for the original path. What is the area of the plot?
- (a) 900 sq.ft                      (b) 1225 sq.ft                      (c) 1600 sq.ft                      (d) 1849 sq.ft                      (e) 2116 sq.ft
86. Amar and Ranjit invested ` 2,00,000 and ` 3,20,000 respectively in a business and agreed that 60% of the profits should be divided equally in the ratio of their investment. If Ranjit gets ` 1,08,000 more than the Amar gets, what is the total profit made in the business?
- (a) ` 4,80,000                      (b) ` 5,40,000                      (c) ` 6,00,000                      (d) ` 7,20,000                      (e) ` 8,10,000
87. A group of workers were unloading boxes from a cargo. The number of workers were between 60 and 70. Each worker handled exactly 13 boxes and each box was handled by exactly 8 workers. Exactly how many boxes were there in the cargo for unloading?
- (a) 88                              (b) 96                              (c) 104                              (d) 112                              (e) 124
88. How many different words can be formed using the letters of the word SQUIRRELFISH, such that the words never start with R?
- (a)  $\frac{4 \times 11!}{3}$                       (b)  $\frac{3 \times 11!}{2}$                       (c)  $\frac{5 \times 11!}{8}$                       (d)  $\frac{7 \times 11!}{8}$                       (e)  $\frac{5 \times 11!}{4}$

89. What is the value of  $\frac{a}{1 + \frac{1}{1 - \frac{1}{1+a}}} \div \frac{a}{a + \frac{a}{a - \frac{a}{1+a}}}$  ?
- (a)  $\frac{a^2 - a + 1}{2a - 1}$       (b)  $\frac{a^2 + a + 1}{2a - 1}$       (c)  $\frac{a^2 + a + 1}{2a + 1}$       (d)  $\frac{a^2 + 1}{2a + 1}$       (e)  $\frac{2a + 1}{a^2 + a + 1}$
90. X is defined as the difference between the largest and the smallest prime numbers below 100 and X can be expressed as a multiple of two prime numbers. If Y is defined as the sum of these two prime multiples, then how many factors does Y have?
- (a) 2                      (b) 4                      (c) 6                      (d) 8                      (e) 10
91. In a school, 150 students offered Hindi as an optional subject, 85 French and 90 Sanskrit. Out of these, 73 offered Hindi only, 52 French only, 18 Hindi and French only and 10 French and Sanskrit only. Totally, how many students are there?
- (a) 250                      (b) 242                      (c) 223                      (d) 218                      (e) 210
92. A square, whose side is 2 meters, has its corners cut away so as to form an octagon with all sides equal. Then the length of each side of the octagon, in meters is:
- (a)  $\frac{\sqrt{2}}{\sqrt{2} + 1}$       (b)  $\frac{2}{\sqrt{2} + 1}$       (c)  $\frac{2}{\sqrt{2} - 1}$       (d)  $\frac{\sqrt{2}}{\sqrt{2} - 1}$       (e)  $\frac{\sqrt{5}}{\sqrt{3} - 1}$
93. The angles of a quadrilateral are in the ratio 3 : 1 : 4 : 2. Then such a plane can be named as
- (a) Square                      (b) Rectangle                      (c) Parallelogram                      (d) Rhombus                      (e) Trapezium
94. A red light flashes 3 times per minute and a green light flashes 5 times in two minutes at regular intervals. If both lights start flashing at the same time, how many times do they flash together in each hour?
- (a) 30                      (b) 24                      (c) 20                      (d) 60                      (e) 80
95. A boy constructed two figures, an equilateral triangle and a semicircle such that the side of an equilateral triangle and the radius of the semicircle are equal. What is the ratio of perimeter of the equilateral triangle to the perimeter of the semicircle?
- (a) 3 : 2π                      (b) 3 : π                      (c) 3 : (1 + π)                      (d) 3 : (2 + π)                      (e) 2 : (3 + π)
96. In the above diagram, ABCD is a rectangle with AE = EF = FB. What is the ratio of the area of the triangle CEF and that of the rectangle?
- (a) 1/6                      (b) 1/8                      (c) 1/9                      (d) 1/7                      (e) 1/2
97. There is a fraction in which both the numerator and the denominator are greater than zero. Another fraction is obtained by taking the numerator as two less than three times the denominator of the original fraction and the denominator as 5 more than two times the numerator of the original fraction. The square root of this fraction is 3/4. If twice the denominator of the original fraction is five more than its numerator, what is the denominator of the original fraction?
- (a) 7                      (b) 11                      (c) 14                      (d) 17                      (e) 19

98. Two men X and Y started working for a certain company at similar jobs on January 1, 1950. X asked for an initial salary of ` 300 with an annual increment of ` 30. Y asked for an initial salary of ` 200 with a rise of ` 15 every six months. Assume that the arrangements remained unaltered till December 31, 1959. Salary is paid on the last day of the month. What is the total amount paid to them as salary during the period?

(a) ` 93,300      (b) ` 93,200      (c) ` 93,100      (d) ` 93,400      (e) ` 93,600

99. In the figure below, AB = 12 cm. D is the midpoint of BC. Also,  $DE \perp BC$ ,  $BG = 5$  cm and  $CH = 15$  cm. What is the ratio of DE : GE?



(a) 12 : 11      (b) 11 : 9      (c) 13 : 11      (d) 15 : 11      (e) 15 : 13

100. A ship leaves on a long voyage. When it is 18 miles from the shore, a seaplane, whose speed is ten times that of the ship, is sent to deliver mail. How far from the shore does the seaplane catch up with the ship?

(a) 200 miles      (b) 220 miles      (c) 22 miles      (d) 20 miles      (e) 202 miles

101. Amna has three sisters. Amna's age is equal to the sum of the ages of his three sisters. 8 years hence, her age would be equal to the sum of the ages of the eldest two and 4 years after that her age would be equal to the sum of the ages of the eldest and the youngest sister and again 4 years after that, her age would be equal to the sum of the ages of his two younger sisters. What is the present age of Amna?

(a) 24 years      (b) 30 years      (c) 36 years      (d) 48 years      (e) 52 years

102. A ladder leans against a vertical wall. The top of the ladder is 8 m above the ground. When the bottom of the ladder is moved 2 m farther away from the wall, the top of the ladder rests against the foot of the wall. What is the length of the ladder?

(a) 10 m      (b) 15 m      (c) 20 m      (d) 17 m      (e) 25 m

103. If a, b and c are the roots of the equation  $x^3 + px^2 + qx + r = 0$ , then what is the value of

$$\frac{1}{a^2} + \frac{1}{b^2} + \frac{1}{c^2}?$$

(a)  $\frac{2pr - q^2}{r^2}$       (b)  $\frac{q^2 + 2rp}{r^2}$       (c)  $\frac{q^2 - 2pr}{r^2}$       (d)  $\frac{r^2 - 2pq}{p^2}$       (e)  $\frac{p^2 - 2pr}{q^2}$

104. Three friends, returning from a movie, stopped to eat at a restaurant. After dinner, they paid their bill and noticed a bowl of mints at the front counter. Sita took  $\frac{1}{3}$  of the mints, but returned four because she had a momentary pang of guilt. Fatima then took  $\frac{1}{4}$  of what was left but returned three for similar reasons. Eswari then took half of the remainder but threw two back into the bowl. The bowl had only 17 mints left when the raid was over. How many mints were originally in the bowl?

(a) 38      (b) 31      (c) 41      (d) 48      (e) 45

105. The values of p, q, r and s are 15, 20, 25 and 30. If s is decreased by 2.5%, r is decreased by 3%, q is decreased by 4% and p is decreased by 2%, then  $(p + q + r + s)$  will decrease by approximately  
(a) 10.4%                      (b) 11.2%                      (c) 11.6%                      (d) 11.8%                      (e) 12.2%
106. At his usual rowing rate, Rahul can travel 12 miles downstream in a certain river in six hours less than it takes him to travel the same distance upstream. But if he could double his usual rowing rate for this 24 mile round trip, the downstream 12 miles would then take only one hour less than the upstream 12 miles. What is the speed of the current in miles per hour?  
(a)  $7/3$                       (b)  $4/3$                       (c)  $5/3$                       (d)  $8/3$                       (e)  $6/3$
107. What is the remainder obtained when  $(12^{21} - 9)$  is divided by 13?  
(a) 1                      (b) 3                      (c) 6                      (d) 9                      (e) 12
108. The smallest number which when divided by 4, 6 or 7 leaves a remainder of 2 is:  
(a) 44                      (b) 62                      (c) 80                      (d) 86                      (e) 76
109. The sum of two three-digit number b67 and aa5 is a four-digit number 1a12. What is the value of  $(a + b)$ ?  
(a) 10                      (b) 11                      (c) 12                      (d) 13                      (e) 14
110. A train X departs from station A at 11:00 a.m. for station B, which is 180 km away. Another train Y departs from station B at 11:00 a.m. for station A. Train X travels at an average speed of 70 km/hr and does not stop anywhere until it arrives at station B. Train Y travels at an average speed of 50 km/hr, but has to stop for 15 minutes at station C, which is 60 kms away from station B enroute to station A. Ignoring the lengths of the trains, what is the distance, to the nearest km, from station A to the point where the trains cross each other?  
(a) 112                      (b) 118                      (c) 120                      (d) 122                      (e) 125

**END OF SECTION III**

## Section IV

### Data Adequacy and Data Interpretation

**I. Directions:** Each question given below has a problem and two statements numbered (1) and (2) giving certain information. You have to decide if the information given in the statements is sufficient for answering the problem. Indicate your answer as:

- a — If the data in statement (1) alone is sufficient to answer the question;
- b — If the data in statement (2) alone is sufficient to answer the question;
- c — If the data in both the statements together are needed to answer the question;
- d — If either statement (1) alone or statement (2) alone is sufficient to answer the question;
- e — If neither statement (1) nor statement (2) suffices to answer the question.

**111.** Among five friends A, B, C, D and E, who is the shortest?

Statement 1: A is taller than B but shorter than C

Statement 2: D is shorter than A but taller than B, who is taller than E

**112.** Four persons A, B, C and D are walking down a road. The ratio of ages of A and B is 1 : 2. Who among the four is the oldest?

Statement 1: The ratio of ages of B and C is the duplicate of the inverse ratio of the ages of A and B.

Statement 2: The ratio of the ages of C and D is the triplicate of the sub duplicate ratio of ages of C and B.

**113.** What is the numerical value of  $5p^2 + 15 - 5qr$  ?

Statement 1:  $p = 2$  and  $q = 3$

Statement 2:  $q, p$  and  $r$  are in geometric progression

**114.** In  $\Delta PQR$ ,  $PQ = PR = 10$  cm. What is the area of the triangle?

Statement 1:  $QR = 10\sqrt{3}$  cm

Statement 2: If  $RP$  is extended to  $S$ ,  $\angle QPS = 60^\circ$

**115.** Two painters were painting an advertising board. At 12 O'clock, they had painted half the board. At what time will the board be fully painted?

Statement 1: The first painter can completely paint the board in 12 hours

Statement 2: The second painter can completely paint the board in 8 hours

**116.** A ship was moving towards lighthouse on the shore with uniform speed. A man standing on the lighthouse observes the ship. Eight minutes later, he finds that the angle of depression was  $45^\circ$ . In how much time does the ship reach the lighthouse?

Statement 1: Initially, the man standing on the lighthouse observes the ship at an angle of depression of  $30^\circ$

Statement 2: The speed of the ship was 6 km/h and the height of the lighthouse is 300 m

**117.** Who saves more, Mr. A or Mr. B?

Statement 1: The ratio of the incomes of A and B is 5 : 6

Statement 2: The ratio of expenditures of A and B is 6 : 5

**118.** How many adults ride bicycles in city A if all adults in City A either ride bicycles or drive cars?

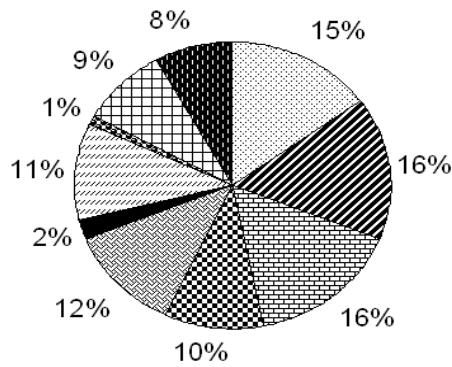
Statement 1: 85% of the 10,000 adults in city A drive cars

Statement 2: 8500 adults in city A drive cars.

119. How many people are reading only newspaper 'The Hindu'?
- Statement 1: Number of people reading the newspaper 'Deccan Chronicle' are 2500 and the number of people reading either 'The Hindu' or 'Deccan Chronicle' or both are 3900
- Statement 2: Number of people reading both 'The Hindu' and 'Deccan Chronicle' 300 and the no. of people reading 'The Hindu' are 1700
120. How much was the Mohan Bagan football card worth in January 1991?
- Statement 1: In January 1997 the card was worth ` 100, 000
- Statement 2: Over the ten years 1987-1997, the card steadily eased in value by 10% each 12 months.
121. What is the area of a rectangle PQRS?
- Statement 1: Semi-perimeter of  $\Delta PRQ$  is 18 cm
- Statement 2:  $PQ = 12$  cm
122. Is the two-digit integer, with digits  $r$  (first) and  $m$  (second), a multiple of 7?
- Statement 1:  $r + m = 13$
- Statement 2:  $r$  is divisible by 3.
123. What is the value of 'x'?
- Statement 1:  $x^2 + x - 6 = 0$
- Statement 2:  $12x^4 + 7x^3 - 61x^2 + 70x - 24 = 0$
124. Ravi sells twice as many ` 20 tickets as Vinay, and Vinay sells three times as many ` 10 tickets as Ravi. How many tickets did Ravi sell? Tickets are either ` 10 or ` 20.
- Statement 1: Vinay sold a total of 35 tickets
- Statement 2: Together Ravi and Vinay sold 70 tickets for ` 1000.
125. The fourth proportion of  $a$ ,  $b$  and  $d$  is 4 and the fourth proportion of  $a$ ,  $b$  and  $c$  is 8. What is the value of 'b'?
- Statement 1: The triplet  $c$ ,  $d$ ,  $e$  are in continued proportion
- Statement 2: The triplets  $a$ ,  $b$ ,  $c$  and  $b$ ,  $c$ ,  $d$  are in continued proportion

II. **Directions:** For the question numbers 126 to 130, a table and a pie graph are given. Study the data carefully and answer the following questions and choose the **best** answer from the five alternatives given below the question.

The following pie chart gives the success rate of international teams playing cricket for the period 2001-08 and the table below the chart gives the number of matches won by each team during the period.



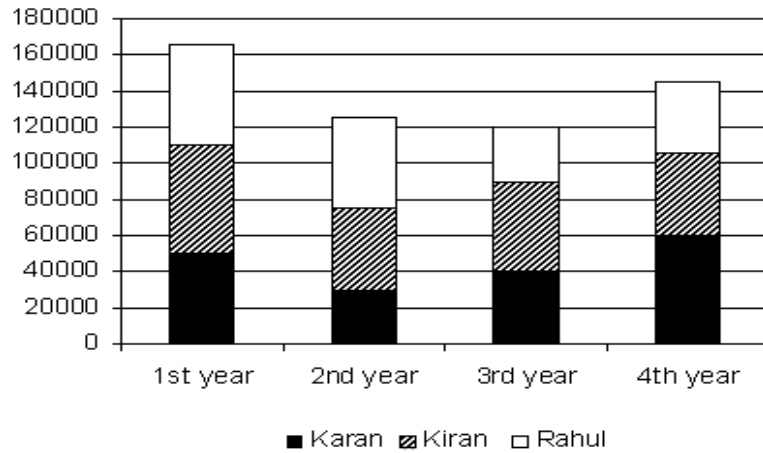
■ India      ■ South Africa      ■ Australia      ■ West Indies      ■ Sri Lanka  
 ■ Bangladesh      ■ New Zealand      ■ Zimbabwe      ■ England      ■ Pakistan

Team	No. of matches won
Australia	144
Bangladesh	10
England	72
India	144
New Zealand	121
Pakistan	96
South Africa	128
Sri Lanka	105
West Indies	84
Zimbabwe	7

126. What is the average number of matches played every year by all the teams?  
 (a) 845                      (b) 967                      (c) 1024                      (d) 1122                      (e) 1296
127. If 10% of the matches each played by New Zealand and West Indies were ended in a tie, what is the total number of matches lost by these two teams?  
 (a) 964                      (b) 1031                      (c) 1156                      (d) 1381                      (e) 1541
128. What is the total number of matches played by teams Australia, Bangladesh, Zimbabwe and Sri Lanka during the given period (no match ended in a tie)?  
 (a) 266                      (b) 976                      (c) 1875                      (d) 2975                      (e) 3525
129. What is the ratio between number of matches won by Sri Lanka and West Indies?  
 (a) 2 : 1                      (b) 3 : 2                      (c) 5 : 4                      (d) 7 : 9                      (e) 15 : 14
130. What is the ratio between the number of matches lost by team India, Zimbabwe and Australia, South Africa?  
 (a) 3 : 5                      (b) 272 : 231                      (c) 312 : 319                      (d) 503 : 476                      (e) 1546 : 1725

III. **Directions:** For the question numbers 131 to 135, a bar graph is given. Study the graph carefully and answer the following questions and choose the **best** answer from the five alternatives given below the question.

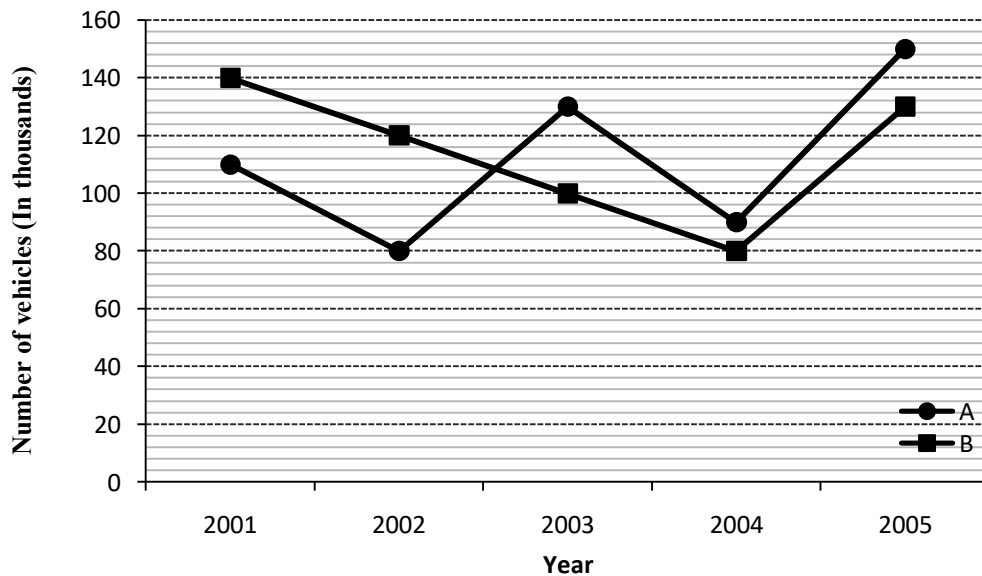
The following bar graph gives the yearly investments of three people in a certain business for various years.



131. Kiran lends the profit earned by him for 2 years at 6% of compound interest. If the profit is ₹ 17,500 for the third year and all have invested the amount for complete year, what is the compound interest earned by Kiran?
- (a) ₹ 854.33      (b) ₹ 901.25      (c) ₹ 954.67      (d) ₹ 1024.75      (e) ₹ 1115.25
132. What is the % of incline/decline in the total investment of Kiran and Rahul in 3<sup>rd</sup> year when compared to 1<sup>st</sup> year?
- (a) 25.94%      (b) 27.34%      (c) 29.83%      (d) 30.43%      (e) 33.46%
133. The profit earned at the end of the 1<sup>st</sup> year is ₹ 67,000. If Karan has invested only for 3 months, Kiran for 5 months and Rahul for 4 months, what is the profit share of Karan at the end of the year?
- (a) ₹ 12,550      (b) ₹ 13,750      (c) ₹ 15,000      (d) ₹ 18,750      (e) ₹ 20,750
134. What is the ratio of difference of investments of Rahul and Karan in the 2<sup>nd</sup> year and the difference of investments of Kiran and Karan in the 2<sup>nd</sup> year?
- (a) 2 : 1      (b) 3 : 2      (c) 4 : 3      (d) 5 : 7      (e) 7 : 8
135. If the profit share of Kiran in 3<sup>rd</sup> year profit of ₹ 15,000 is ₹ 2,500 and Karan and Rahul invested for 5 months each, what is the ratio of profits between Karan, Kiran and Rahul respectively?
- (a) 4 : 5 : 3      (b) 11 : 13 : 16      (c) 15 : 30 : 22      (d) 20 : 7 : 15      (e) 22 : 7 : 34

IV. **Directions:** For the question numbers 136 to 140, a graph is given. Study the graph carefully and answer the following questions and choose the **best** answer from the five alternatives given below the question.

The following line-graph gives the number of vehicles (in thousands) manufactured by two companies over the years.



136. What was the average number of vehicles manufactured by company A over the given period? (Round off to nearest integer)
- (a) 1,08,000      (b) 1,12,000      (c) 1,20,000      (d) 1,26,000      (e) 1,31,000
137. In which of the following years, the difference between the productions of companies A and B was the maximum?
- (a) 2001      (b) 2002      (c) 2003      (d) 2004      (e) 2005
138. What was the difference between the total production of the two companies in the given years?
- (a) 8,000      (b) 8,500      (c) 9,500      (d) 10,000      (e) 11,000
139. The production of company B in 2005 is approximately what percent of the production of company A in 2002?
- (a) 101.25%      (b) 122.5%      (c) 146.25%      (d) 154.0%      (e) 162.5%
140. What was the difference between the number of vehicles manufactured by the company B in 2003 and 2004?
- (a) 21,000      (b) 20,000      (c) 18,000      (d) 16,000      (e) 14,000

**END OF SECTION IV**

**END OF QUESTION PAPER**

## Key for IBSAT Model Paper-1

Verbal Ability			
S. No.	Key	S. No.	Key
1	C	26	E
2	B	27	E
3	D	28	D
4	D	29	D
5	A	30	D
6	D	31	E
7	E	32	B
8	E	33	C
9	B	34	A
10	B	35	D
11	B	36	C
12	C	37	B
13	B	38	A
14	B	39	D
15	E	40	D
16	A	41	A
17	C	42	A
18	D	43	B
19	B	44	D
20	A	45	C
21	C	46	D
22	B	47	B
23	D	48	E
24	D	49	A
25	A	50	B

Reading Comprehension	
S. No.	Key
51	C
52	B
53	B
54	E
55	C
56	A
57	E
58	B
59	B
60	C
61	D
62	A
63	B
64	D
65	E
66	E
67	B
68	C
69	A
70	E
71	B
72	D
73	C
74	C
75	C
76	D
77	D
78	A
79	C
80	D

Quantitative Aptitude	
S. No.	Key
81	C
82	D
83	C
84	D
85	C
86	D
87	C
88	E
89	C
90	C
91	C
92	B
93	E
94	A
95	D
96	A
97	B
98	A
99	E
100	D
101	C
102	D
103	C
104	D
105	A
106	D
107	B
108	D
109	C
110	A

Data Adequacy and Data Interpretation	
S. No.	Key
111	C
112	C
113	D
114	D
115	C
116	D
117	C
118	A
119	D
120	C
121	C
122	C
123	C
124	B
125	B
126	D
127	E
128	D
129	C
130	D
131	B
132	D
133	C
134	C
135	D
136	B
137	B
138	D
139	E
140	B